

NDB OP
339

APP CRS
302°

Rwy Idg	5651
TDZE	796
Apt Elev	798

NDB RWY 30
THOMASTON-UPSON COUNTY (OPN)



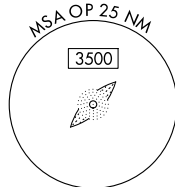
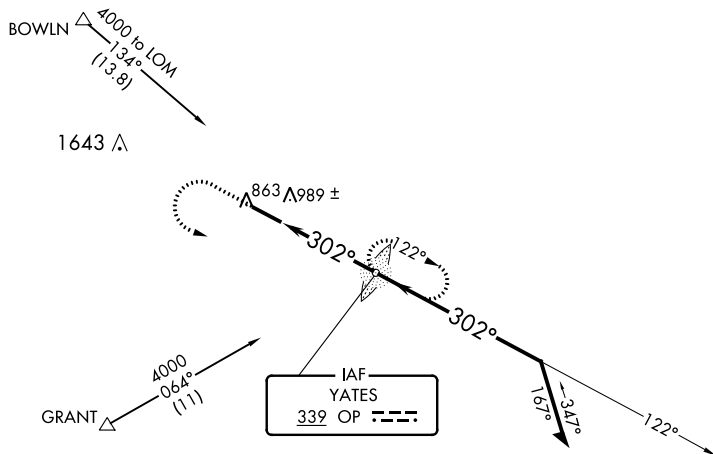
When local altimeter setting not received, use Atlanta Rgnl Falcon Field altimeter setting and increase all MDA 80 feet; increase S-30 Cats C, D visibility $\frac{1}{4}$ mile.



MISSED APPROACH: Climb to 1500 then climbing left turn to 3000 direct YATES LOM and hold.

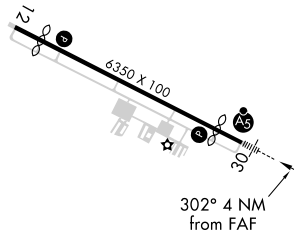
AWOS-3
133.975

ATLANTA APP CON ★
124.2 279.6

UNICOM
122.8 (CTAF) **L**

ELEV 798

TDZE 796

MIRL Rwy 12-30 **L**

FAF to MAP 4 NM

Knots	60	90	120	150	180
Min:Sec	4:00	2:40	2:00	1:36	1:20

