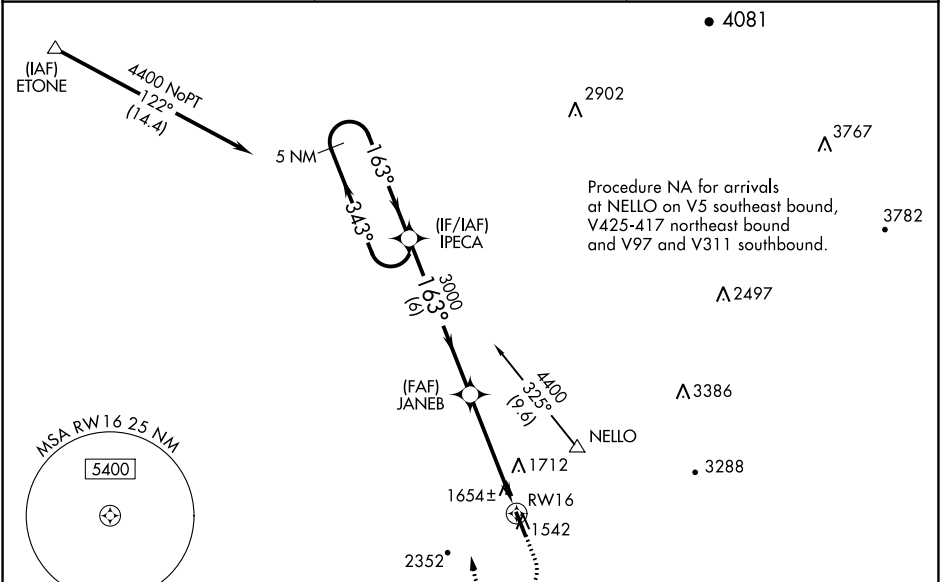


WAAS CH 82005 W16A	APP CRS 163°	Rwy Idg TDZE 1515 Apt Elev 1535
--	------------------------	---

RNAV (GPS) RWY 16
PICKENS COUNTY (JZP)

<div><div>NA</div><div>Baro-VNAV NA when using Canton altimeter setting. For uncompensated Baro-VNAV systems, LNAV/VNAV NA below -18°C (0°F) or above 54°C (130°F). DME/DME RNP-0.3 NA. Helicopter visibility reduction below ¾ SM NA. When local altimeter setting not received, use Canton altimeter setting and increase LPV DA to 1976 LNAV/VNAV DA to 1889 and all MDA 80 feet, increase LPV all Cats visibility to 1½, LNAV/VNAV all Cats visibility to 1¾, LNAV Cat C visibility to 1¾ and Circling Cat C visibility to 2¾.</div></div> <div>MISSED APPROACH: Climb to 3000 then climbing right turn to 4400 direct IPECA and hold.</div>
--

AWOS-3PT 118.55	ATLANTA CENTER 133.1 342.425	UNICOM 122.725 (CTAF)
---------------------------	--	---------------------------------



VGSI and RNAV glidepath not coincident (VGSI Angle 3.00/TCH 30).		3000	4400	IPECA
5 NM Holding Pattern		↑	↷	✧
4400 ← 343° 163° → 3000		JANEb		
GP 3.00° TCH 40		3000		RW16
		6 NM		4.6 NM
CATEGORY	A	B	C	D
LPV DA	1925-1¾ 410 (400-1¾)			NA
LNAV/VNAV DA	1838-1½ 323 (400-1½)			NA
LNAV MDA	1980-1	465 (500-1)	1980-1¾ 465 (500-1¾)	NA
CIRCLING	1980-1 445 (500-1)	2160-1 625 (700-1)	2360-2½ 825 (900-2½)	NA

ELEV 1535

TDZE 1515

163° to RW16

0-7400

5000 x 100

34

MIRL Rwy 16-34