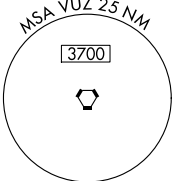
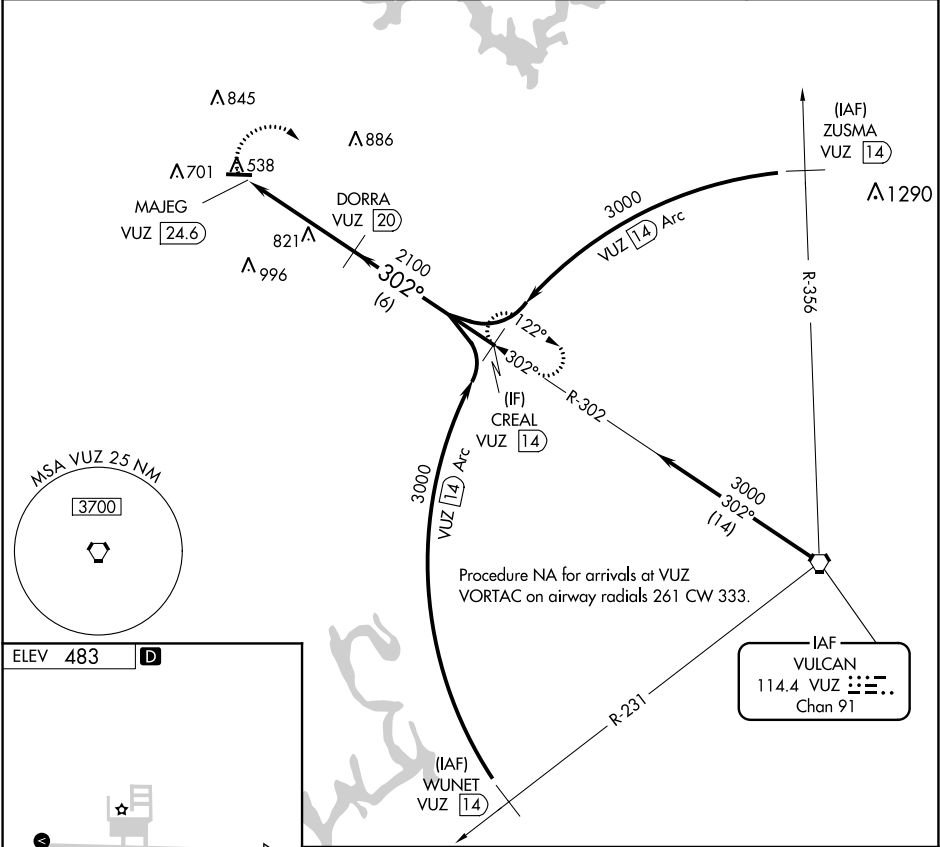


VORTAC VUZ	APP CRS	Rwy Idg	N/A
114.4	302°	TDZE	N/A
Chan 91		Apt Elev	483

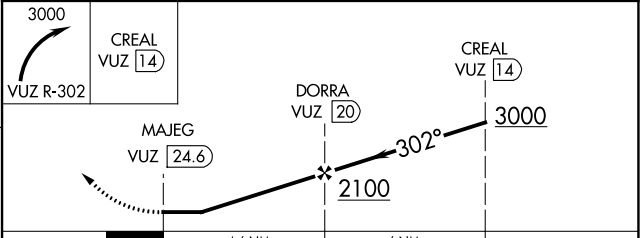
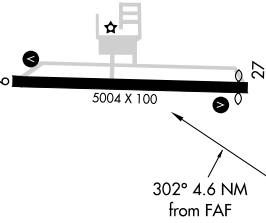
VOR/DME-A
WALKER COUNTY-BEVILL FIELD (JFXX)



When local altimeter setting not received, use Birmingham altimeter setting and increase all MDA 120 feet and Cat C/D visibility ¼ mile.	MISSED APPROACH: Climbing right turn to 3000 on VUZ VORTAC R-302 to CREAL/14 DME and hold.
--	--

AWOS-3PT 119.225	BIRMINGHAM APP CON 127.675 338.2	UNICOM 122.7 (CTAF) 0
---------------------	-------------------------------------	--------------------------



ELEV 483 D



		4.6 NM		6 NM	
MIRL Rwy 9-27  REIL Rws 9 and 27 	CATEGORY	A	B	C	D
	CIRCLING	1160-1 677 (700-1)	1160-1¼ 677 (700-1¼)	1160-2 677 (700-2)	1160-2¼ 677 (700-2¼)

SE-4, 31 DEC 2020 to 28 JAN 2021

SE-4, 31 DEC 2020 to 28 JAN 2021