

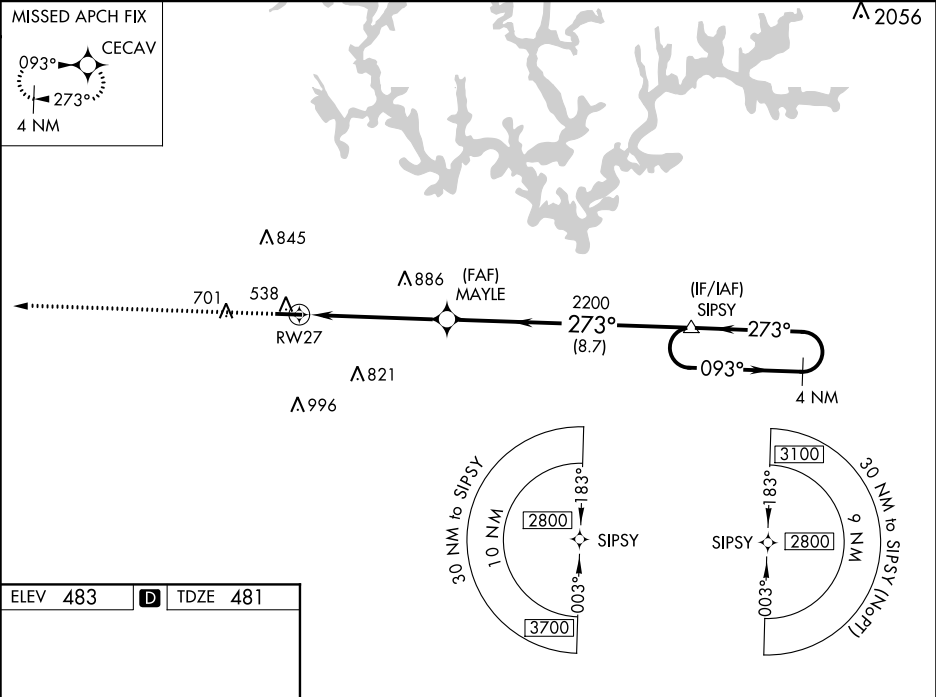
WAAS Ch 49025 W27A	APP CRS 273°	Rwy Idg 4800 TDZE 481 Apt Elev 483
--	------------------------	---

RNAV (GPS) RWY 27
WALKER COUNTY-BEVILL FIELD (JF'X)

Baro-VNAV NA when using Birmingham altimeter setting. For uncompensated Baro-VNAV systems, LNAV/VNAV NA below -15°C (5°F) or above 40°C (104°F). DME/DME RNP-0.3 NA. Helicopter visibility reduction below ¾ SM NA. VDP NA with Birmingham altimeter setting. When local altimeter setting not received, use Birmingham altimeter setting and increase all DA 104 feet and all MDA 120 feet. Increase LPV all Cats, LNAV/VNAV all Cats, LNAV Cat C/D and Circling Cat C visibility ¾ mile and Circling Cat D visibility ½ mile.

MISSED APPROACH:
Climb to 2800 direct
CECAV and hold.

AWOS-3PT 119.225	BIRMINGHAM APP CON 127.675 338.2	UNICOM 122.7 (CTAF)
----------------------------	--	-------------------------------



ELEV **483** **D** TDZE **481**

2800 CECAV

* LNAV only

RW27

MAYLE

SIPSY

4 NM Holding Pattern

093° → 2800

← 273°

GP 3.00° TCH 44

1.6 NM
3.6 NM
8.7 NM

CATEGORY	A	B	C	D
LPV DA	789-1 308 (300-1)			
LNAV/ DA VNAV	964-1 5/8 483 (500-1 5/8)			
LNAV MDA	1040-1	559 (600-1)	1040-1 5/8 559 (600-1 5/8)	
CIRCLING	1040-1	557 (600-1)	1040-1 5/8 557 (600-1 5/8)	1080-2 597 (600-2)