

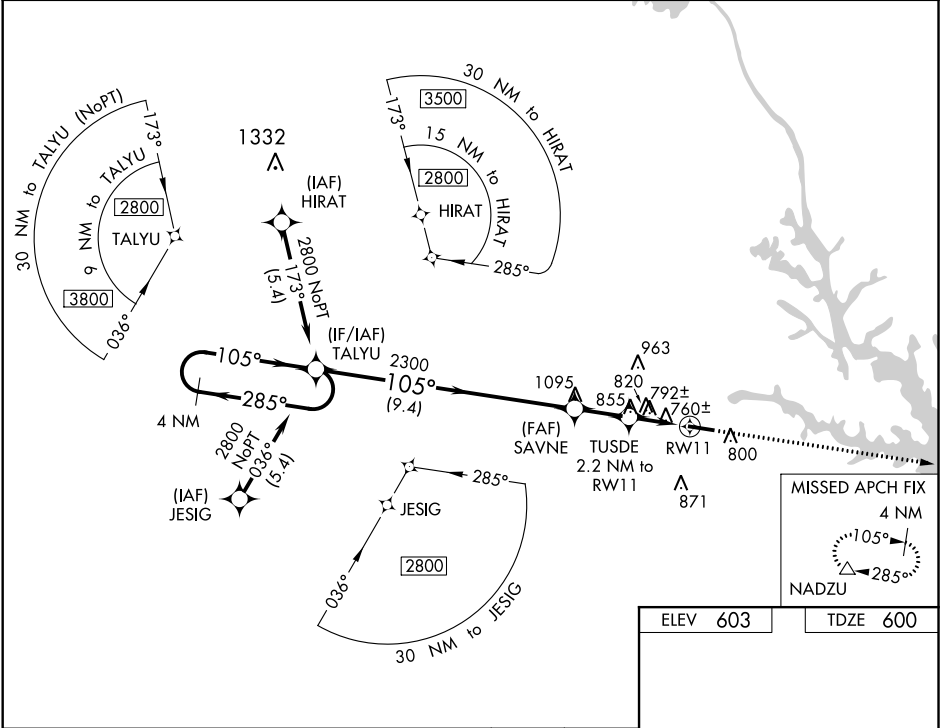
WAAS CH 72735 W11A	APP CRS 105°	Rwy Idg 5004 TDZE 600 Apt Elev 603
--	------------------------	---

RNAV (GPS) RWY 11
ELBERT COUNTY-PATZ FIELD (EBA)

⚠ DME/DME RNP-0.3 NA. Procedure NA at night. Helicopter visibility reduction below 1 SM NA. When local altimeter setting not received, use Anderson altimeter setting and increase all MDA 100 feet and increase LP Cat C visibility ¼ mile, LNAV Cat C visibility ⅓ mile and Circling Cat C visibility ½ mile.

⚠ MISSED APPROACH: Climb to 2500 direct NADZU and hold.

AWOS-3 118.15	ATLANTA CENTER 127.5 316.05	UNICOM 122.8 (CTAF) 1
-------------------------	---------------------------------------	---------------------------------



4 NM Holding Pattern TALYU

Descent angle NA.

2500 NADZU

2800 ← 285° → 105° → 105°

SAVNE

TUSDE 2.2 NM to RW11

2300 1500 RW11

9.4 NM 2 NM 2.2 NM

CATEGORY	A	B	C	D
LP MDA	1060-1	460 (500-1)	1060-1½ 460 (500-1½)	NA
LNAV MDA	1120-1	520 (600-1)	1120-1½ 520 (600-1½)	NA
C CIRCLING	1160-1	557 (600-1)	1340-2 737 (800-2)	NA

ELEV 603 TDZE 600

MIRL Rwy 11-29 1

SE-4, 31 DEC 2020 to 28 JAN 2021

SE-4, 31 DEC 2020 to 28 JAN 2021