

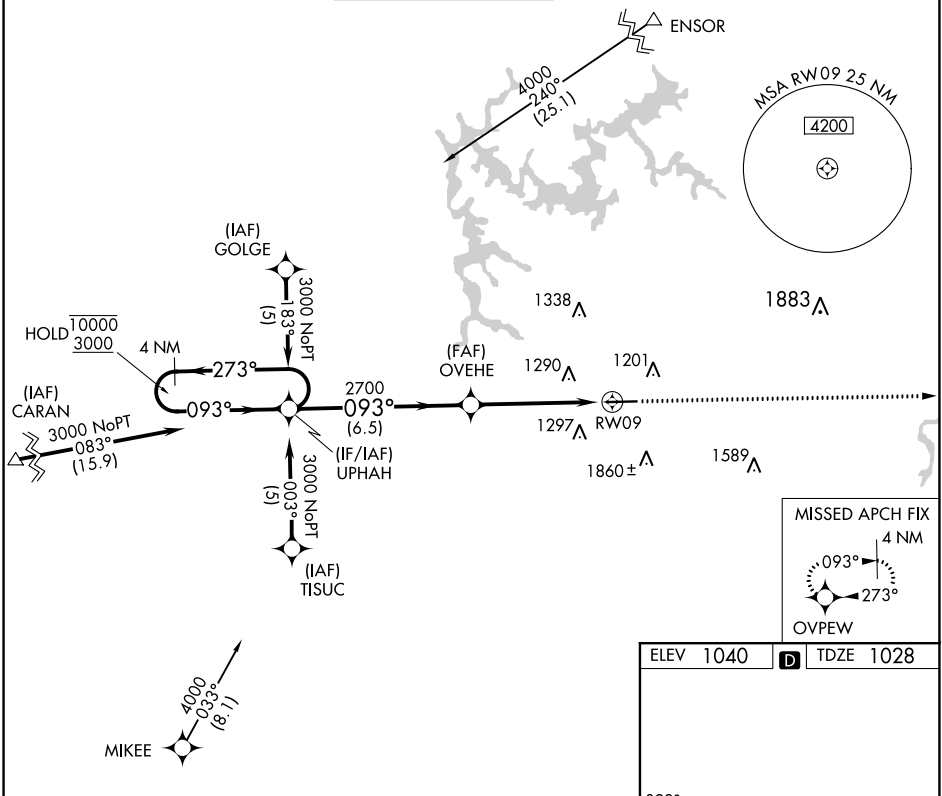
APP CRS	Rwy ldg	5233
093°	TDZE	1028
	Apt Elev	1040

RNAV (GPS) RWY 9

COBB COUNTY INTL-McCOLLUM FIELD (RYY)

RNP APCH.	MISSED APPROACH: Climb to 3100 direct OVEPEW and hold.
⚠ Rwy 9 helicopter visibility reduction below 1 SM NA. Straight-in Rwy 9 NA at night, Circling Rwy 9 NA at night.	

ATIS 128.125	ATLANTA APP CON 121.0 268.7	McCOLLUM TOWER ★ 125.9 (CTAF) 0	GND CON 119.0	CLNC DEL 119.0 268.7	UNICOM 122.7
-----------------	--------------------------------	------------------------------------	------------------	-------------------------	-----------------



4 NM Holding Pattern UPHAH		Visual Segment - Obstacles.		3100	OVEPEW
10000 ← 273° 3000 → 093°		OVEHE		RWY09	
		2700			
		6.5 NM		5.1 NM	
CATEGORY	A	B	C	D	
LNNAV MDA	1560-1	532 (600-1)	1560-1½	532 (600-1½)	
CIRCLING	1780-1	740 (800-1)	1780-2	2220-3	
			740 (800-2)	1180 (1200-3)	

SE-4, 31 DEC 2020 to 28 JAN 2021

SE-4, 31 DEC 2020 to 28 JAN 2021