

WAAS CH <b>97308</b> <b>W27A</b>	APP CRS <b>273°</b>	Rwy Idg TDZE <b>1011</b> Apt Elev <b>1040</b>
--	------------------------	---

RNAV (GPS) RWY 27

COBB COUNTY INTL-McCOLLUM FIELD (RYY)

▼

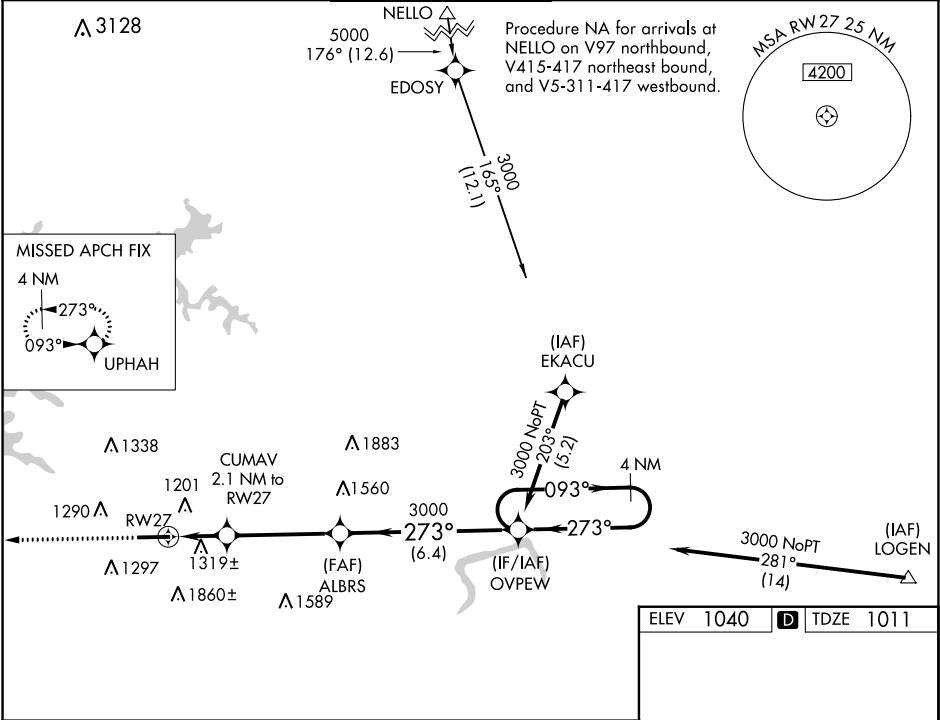
Baro-VNAV NA when using Hartsfield-Jackson Atlanta Intl altimeter setting.  
For uncompensated Baro-VNAV systems, LNAV/VNAV NA below -17°C (2°F) or above 37°C (98°F). DME/DME RNP-0.3 NA. When local altimeter setting not received, use Hartsfield-Jackson Atlanta Intl altimeter setting and increase all DA/MDA 60 feet; increase LPV all Cats and LNAV Cats C and D visibility ½ mile; increase Circling Cat C visibility ¼ mile.

⚠

MALSF

MISSED APPROACH:  
Climb to 3000 direct UPHAH and hold.

ATIS <b>128.125</b>	ATLANTA APP CON <b>121.0 268.7</b>	McCOLLUM TOWER * <b>125.9 (CTAF) 0</b>	GND CON <b>119.0</b>	CLNC DEL <b>119.0 268.7</b>	UNICOM <b>122.7</b>
------------------------	---------------------------------------	---	-------------------------	--------------------------------	------------------------



3000	UPHAH				
* LNAV only	CUMAV 2.1 NM to RW27	ALBRS 3000	OVPEW	4 NM Holding Pattern	
RW27		273°	273°	093°	3000
1700*		3000	GP 3.00° TCH 46		
2.1 NM		4 NM	6.4 NM		
CATEGORY	A	B	C	D	
LPV DA	1211-3/4 200 (200-3/4)				
LNAV/VNAV DA	1680-2 1/2 669 (700-2 1/2)				
LNAV MDA	1580-1 569 (600-1)		1580-1 3/4 569 (600-1 3/4)		
CIRCLING	1780-1 740 (800-1)		1780-2 740 (800-2)		2220-3 1180 (1200-3)

ELEV 1040

TDZE 1011

TWR 1168

6295 X 100

0.7% UP

273° to RW27

HIRL Rwy 9-27 0