

WAAS CH <b>40216</b> <b>W09A</b>	APP CRS <b>094°</b>	Rwy Idg <b>5390</b> TDZE <b>569</b> Apt Elev <b>569</b>
--	------------------------	---

RNAV (GPS) RWY 9

MERKEL FIELD SYLAUCA MUNI (SCD)

▼

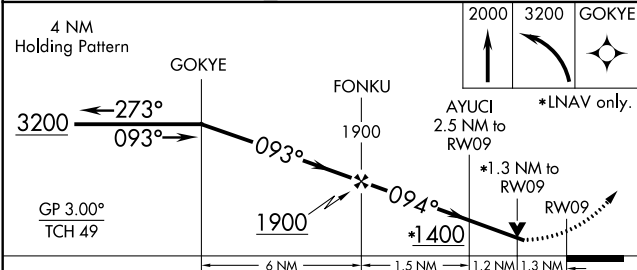
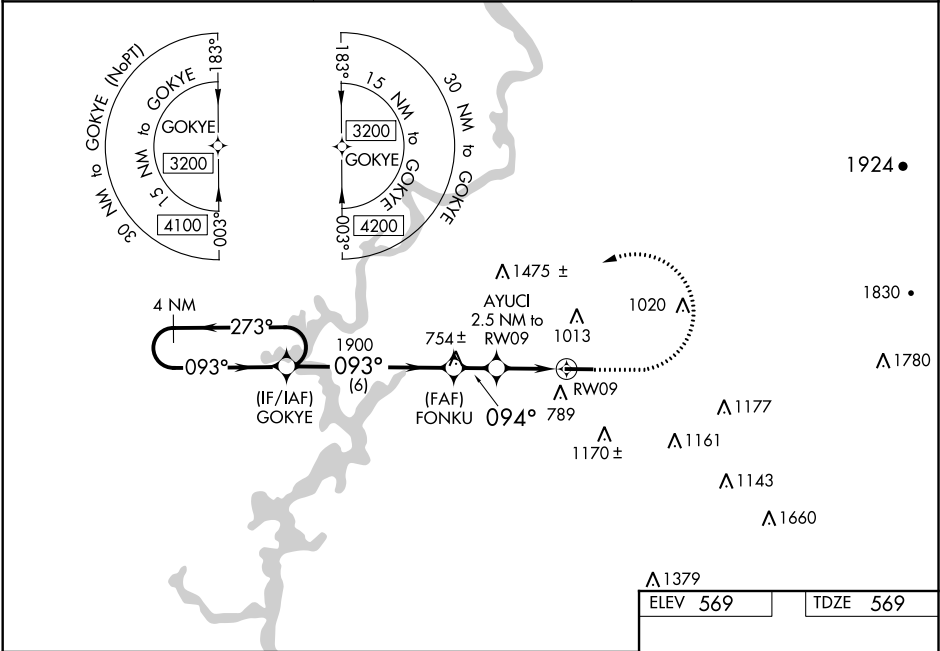
Baro-VNAV NA when using Birmingham altimeter setting. For uncompensated Baro-VNAV systems, LNAV/VNAV NA below -20°C (-4°F) or above 54°C (130°F).

⚠

DME/DME RNP-0.3 NA. Helicopter visibility reduction below ¾ SM NA. When local altimeter setting not received; use Birmingham altimeter setting and increase LPV DA to 1066, LNAV/VNAV DA to 1139 and all visibilities ¾ mile. Increase all MDA 100 feet and LNAV Cats C and D visibility ½ mile. VDP NA when using Birmingham altimeter setting.

MISSED APPROACH: Climb to 2000 then climbing left turn to 3200 direct GOKYE and hold.

AWOS-3PT <b>119.125</b>	BIRMINGHAM APP CON <b>123.8 256.8</b>	UNICOM <b>122.8 (CTAF) 0</b>
----------------------------	--	---------------------------------



ELEV 569	TDZE 569
<div><div>2000</div><div>3200</div><div>GOKYE</div></div> <div><div>↑</div><div>↶</div><div>✦</div></div> <div>*LNAV only.</div> <div><div>☆</div><div>094° to RW09</div><div>5390 X 100</div><div>27</div></div>	
<div><div>CIRCLING</div><div>1140-1 571 (600-1)</div><div>1400-1¼ 831 (900-1¼)</div><div>1620-3 1051 (1100-3)</div><div>1700-3 1131 (1200-3)</div></div> <div>MIRL Rwy 9-27 0 REIL Rwy 9 and 27 0</div>	