

WAAS Ch 82199 W23A	APP CRS 233°	Rwy Idg TDZE Apt Elev	6007 700 700
--	------------------------	-----------------------------	---

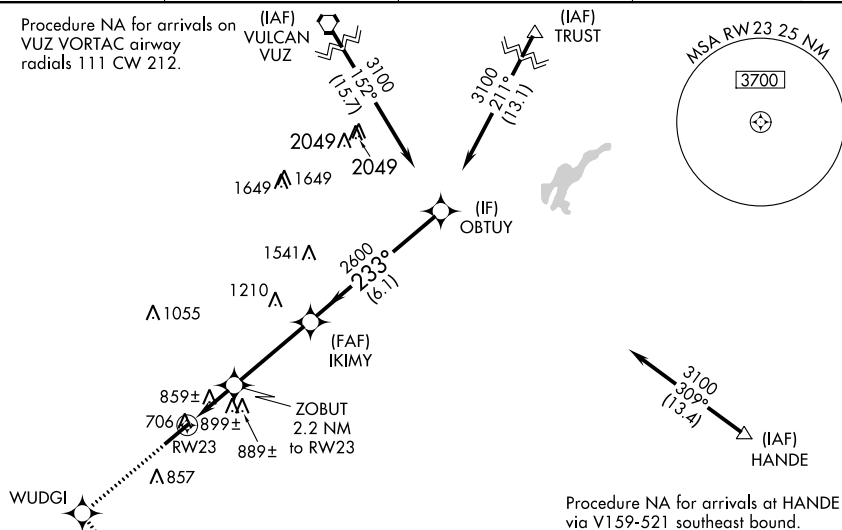
RNAV (GPS) RWY 23
BESSEMER (EKY)

⚠ For uncompensated Baro-VNAV systems, LNAV/VNAV NA below -16°C (4°F) or above 54°C (130°F). DME/DME RNP-0.3 NA. Helicopter visibility reduction below ¾ SM NA. When local altimeter setting not received, use Alabaster altimeter setting and increase all DA 41 feet and all MDA 60 feet, increase LNAV Cat C and D visibility ¼ mile. Baro-VNAV and VDP NA when using Alabaster altimeter setting.

MISSED APPROACH: Climb to 4000 direct WUDGI and on track 148° to TASYU and hold, continue climb-in-hold to 4000.

AWOS-3PT 118.825	BIRMINGHAM APP CON 124.9 351.85	CLNC DEL 123.75	UNICOM 123.0 (CTAF) 0
----------------------------	---	---------------------------	---------------------------------

Procedure NA for arrivals on
VUZ VORTAC airway
radials 111 CW 212.



Procedure NA for arrivals at HANDE
via V159-521 southeast bound.

MISSED APCH FIX

TASYU

175°

355°

4 NM

148°

ELEV 700

TDZE 700

233° to RW23

6007 x 100

***LNAV only**

4000

WUDGI

fr 148°

TASYU

IKIMY

2600

OBTUY

3100

Procedure Turn NA

GP 3.00°

TCH 40

***1.3 NM to RW23**

ZOBUT

2.2 NM to RW23

1440*

2600

233°

1.3 NM

0.9 NM

3.6 NM

6.1 NM

CATEGORY	A	B	C	D
LPV DA	972-1	272 (300-1)		
LNAV/VNAV DA	1170-1¾	470 (500-1¾)		
LNAV MDA	1160-1	460 (500-1)	1160-1¼ 460 (500-1¼)	1160-1½ 460 (500-1½)
CIRCLING	1200-1	500 (500-1)	1220-1½ 520 (600-1½)	1260-2 560 (600-2)

HIRL Rwy 5-23

REIL Rwy 5 and 23