

LOC I-AAQ
110.75

APP CRS
097°

Rwy Idg **5215**
TDZE **467**
Apt Elev **501**

ILS or LOC/NDB RWY 10
THOMSON-McDUFFIE COUNTY (HQU)

ADF required for procedure entry. ADF required.

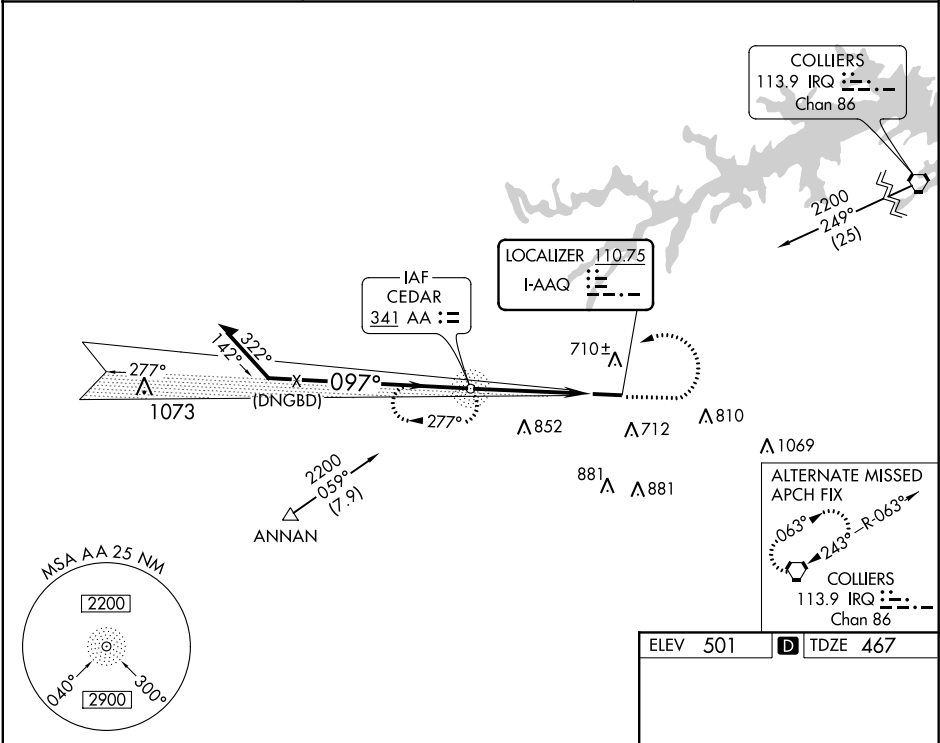
▼

NA

When local altimeter setting not received, use Daniel Field altimeter setting: increase DA to 916 feet and visibility 1/8 SM; increase all MDAs 80 feet and visibility S-LOC 10 Cats C/D and Circling Cat C 1/4 SM, and Circling Cat D 1/2 SM.

MISSED APPROACH: Climb to 1200 then climbing left turn to 2400 direct AA NDB and hold.

AWOS-3 120.625	AUGUSTA APP CON ★ 126.8 270.3	UNICOM 122.8 (CTAF) 0
--------------------------	---	---------------------------------



Remain within 10 NM

AA NDB

1200

2400

AA

097° 4.5 NM from FAF

GS 3.00° TCH 49

2200

1947

2000

4.5 NM

097°

277°

1200

2400

AA

097° 4.5 NM from FAF

551.4 X 100

1.0% Up

28

CATEGORY	A	B	C	D
S-ILS 10	849-1¼		382 (400-1¼)	
S-LOC 10	960-1	493 (500-1)	960-1⅔	493 (500-1⅔)
CIRCLING	1060-1 559 (600-1)	1080-1 579 (600-1)	1160-1¾ 659 (700-1¾)	1240-2¼ 739 (800-2¼)

HIRL Rwy 10-28

FAF to MAP 4.5 NM

Knots	60	90	120	150	180
Min:Sec	4:30	3:00	2:15	1:48	1:30