

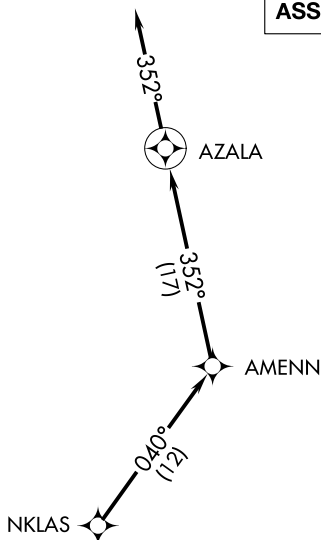
AL-6201 (FAA)

AZALA FOUR DEPARTURE (RNAV)

THOMSON-McDUFFIE COUNTY (HQU)
THOMSON, GEORGIA

AUGUSTA DEP CON ★
126.8 270.3
CTAF
122.8

**TOP ALTITUDE:
ASSIGNED BY ATC**



TAKEOFF MINIMUMS:

Rwy 10: Standard.

Rwy 28: 200-1¼ or standard with minimum climb of 235' per NM to 700, or alternatively, with standard takeoff minimums and a normal 200' per NM climb gradient, takeoff must occur no later than 1900' prior to DER.

NOTE: RADAR and GPS required.

NOTE: RNAV 1.

NOTE: Do not exceed 250K until advised by ATC.

NOTE: For prop aircraft during Masters golf tournament week only.

NOTE: Chart not to scale.



DEPARTURE ROUTE DESCRIPTION

TAKEOFF RWY 10, 28: Climb on assigned heading for RADAR vectors to NKLAS. Then on depicted route to AZALA, then fly heading 352°, for RADAR vectors, thence. . .

...maintain altitude assigned by ATC. Expect clearance to filed altitude/flight level within 10 minutes after departure.

AZALA FOUR DEPARTURE (RNAV)
(AZALA4.AZALA) 19JUL18

THOMSON, GEORGIA
THOMSON-McDUFFIE COUNTY (HQU)

SE-4, 31 DEC 2020 to 28 JAN 2021