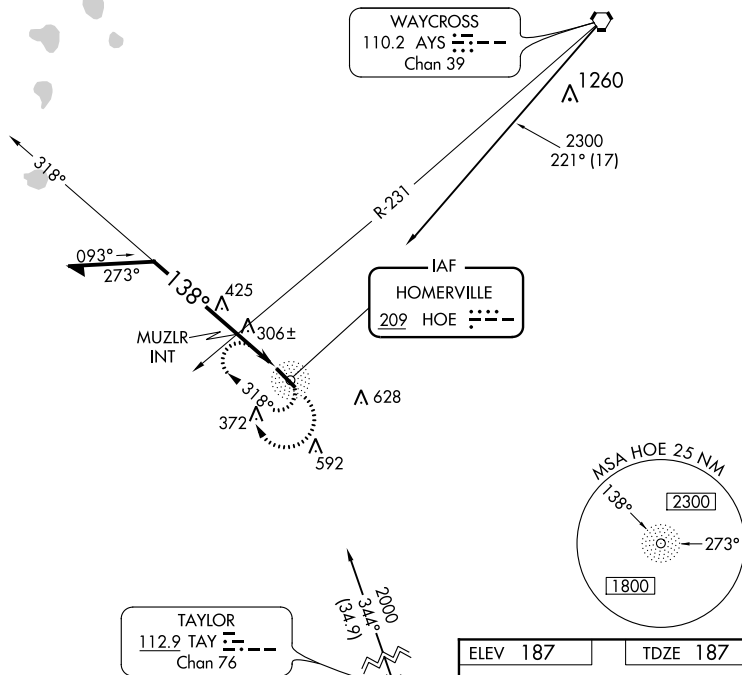


NDB RWY 14  
HOMERVILLE (HOE)

**MISSED APPROACH:** Climbing right turn to 1800 in HOE NDB holding pattern.

CTAF  
122.9 **L**



HOE NDB	1800 	HOE 
------------	---	--

Diagram illustrating the descent path from 1800 feet to 820 feet:

- Initial altitude: 1800
- Descent angle 1: 318°
- Descent angle 2: 138°
- Intermediate point: MUZLR INT
- Descent angle 3: 2.92°
- Final altitude: \*820
- Vertical distance from 1800 to 820: TCH 40

\*880 when using Waycross altimeter setting.

MUZR  
INT  $\frac{2.92^\circ}{TCH\ 40}$

CATEGORY	A	B	C	D
S-14	820-1	633 (700-1)	820-1 $\frac{3}{4}$	633 (700-1 $\frac{3}{4}$ )
 CIRCLING	820-1	633 (700-1)	940-2 $\frac{1}{4}$ 753 (800-2 $\frac{1}{4}$ )	940-2 $\frac{1}{2}$ 753 (800-2 $\frac{1}{2}$ )
MUZLR FIX MINIMUMS				
S-14	620-1	433 (500-1)	620-1 $\frac{1}{4}$	433 (500-1 $\frac{1}{4}$ )
 CIRCLING	680-1 493 (500-1)	740-1 553 (600-1)	940-2 $\frac{1}{4}$ 753 (800-2 $\frac{1}{4}$ )	940-2 $\frac{1}{2}$ 753 (800-2 $\frac{1}{2}$ )

MIRL Rwy 14-32 **L**