

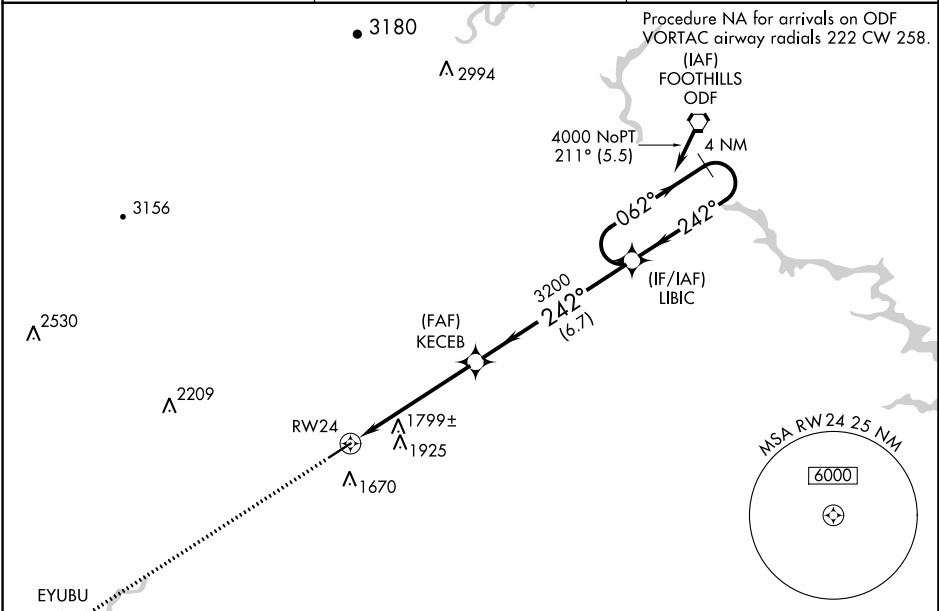
WAAS CH 49121 W24A	APP CRS 242°	Rwy Idg TDZE 1448 Apt Elev 1448
--	------------------------	---

RNAV (GPS) RWY 24
HABERSHAM COUNTY (AJR)

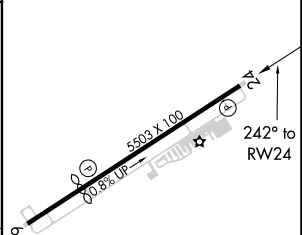
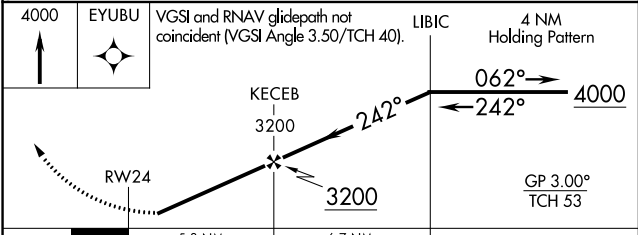
NA DME/DME RNP-0.3 NA. Rwy 24 helicopter visibility reduction below 1 SM NA. When local altimeter setting not received use Gainesville altimeter setting and increase all DA 69 feet and all MDA 80 feet: increase visibility LPV and LNAV/VNAV all Cats ¼ mile, LNAV Cat C and D ½ mile, Circling Cat C and D ¼ mile. When VGSi inop, Straight-in/Circling Rwy 24 procedure NA at night. Baro-VNAV NA when using Gainesville altimeter setting. For uncompensated Baro-VNAV systems, LNAV/VNAV NA below -17°C (2°F) or above 34°C (93°F).

MISSED APPROACH:
Climb to 4000 direct EYUBU and hold.

AWOS-3 119.175	ATLANTA CENTER 134.8 379.95	UNICOM 122.7 (CTAF) 0
--------------------------	---------------------------------------	---------------------------------



ELEV 1448	TDZE 1448
------------------	------------------



CATEGORY	A	B	C	D
LPV DA		1852-1⅜	404 (500-1⅜)	
LNAV/VNAV DA		2154-2½	706 (800-2½)	
LNAV MDA	2060-1	612 (700-1)	2060-1¾	612 (700-1¾)
CIRCLING	2060-1 612 (700-1)	2100-1 652 (700-1)	2100-1¾ 652 (700-1¾)	2240-2½ 792 (800-2½)

MIRL Rwy 6-24 0

SE-4, 31 DEC 2020 to 28 JAN 2021

SE-4, 31 DEC 2020 to 28 JAN 2021