

VOR/DME AHN <b>109.6</b> Chan <b>33</b>	APP CRS <b>111°</b>	Rwy Idg <b>4020</b> TDZE <b>646</b> Apt Elev <b>646</b>
---	------------------------	---

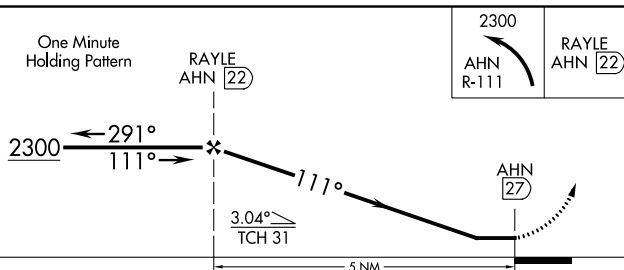
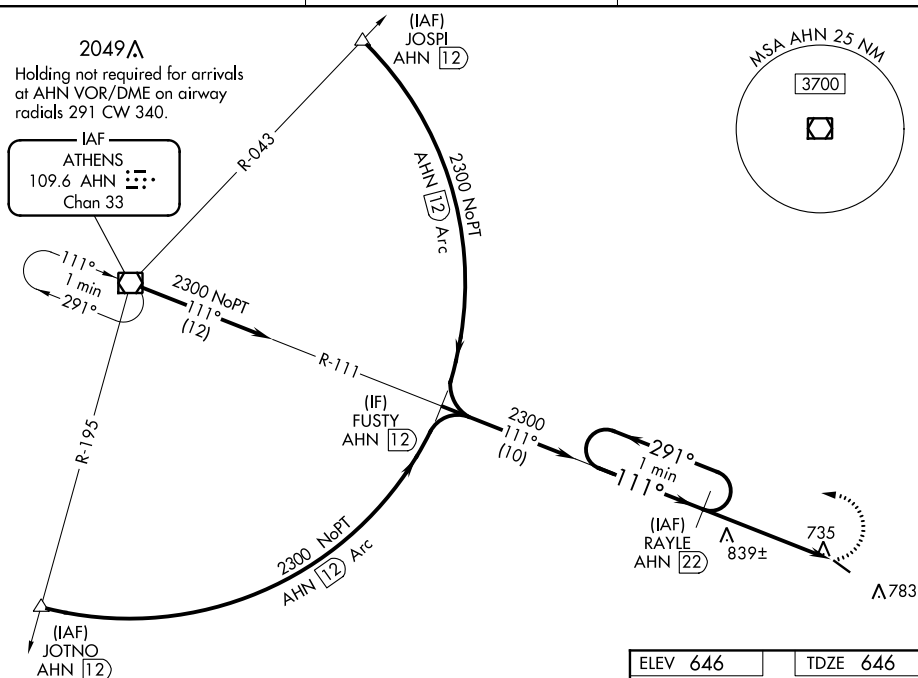
VOR/DME RWY 13  
WASHINGTON-WILKES COUNTY (IIY)

**T**  
**A** NA  
If local altimeter setting not received, use Athens  
altimeter setting and increase all MDAs 100 feet.  
Rwy 13 helicopter visibility reduction below  $\frac{3}{4}$  SM NA.

**MISSED APPROACH:** Climbing left turn to 2300  
via AHN R-111 to RAYLE/22 DME and hold.

AWOS-3  
118.375

AUGUSTA APP CON★  
126.8 270.3

UNICOM  
122.7 (CTAF) **L**

CATEGORY	A	B	C	D
S-13	1200-1 554 (600-1)	1200-1 $\frac{1}{4}$ 554 (600-1 $\frac{1}{4}$ )	1200-1 $\frac{5}{8}$ 554 (600-1 $\frac{5}{8}$ )	NA
CIRCLING	1200-1 554 (600-1)	1200-1 $\frac{1}{4}$ 554 (600-1 $\frac{1}{4}$ )	1200-1 $\frac{5}{8}$ 554 (600-1 $\frac{5}{8}$ )	NA

MIRL Rwy 13-31 **L**