

WAAS  
CH **62809**  
**W13A**

APP CRS  
**129°**

Rwy Idg **4020**  
TDZE **646**  
Apt Elev **646**

RNAV (GPS) RWY 13

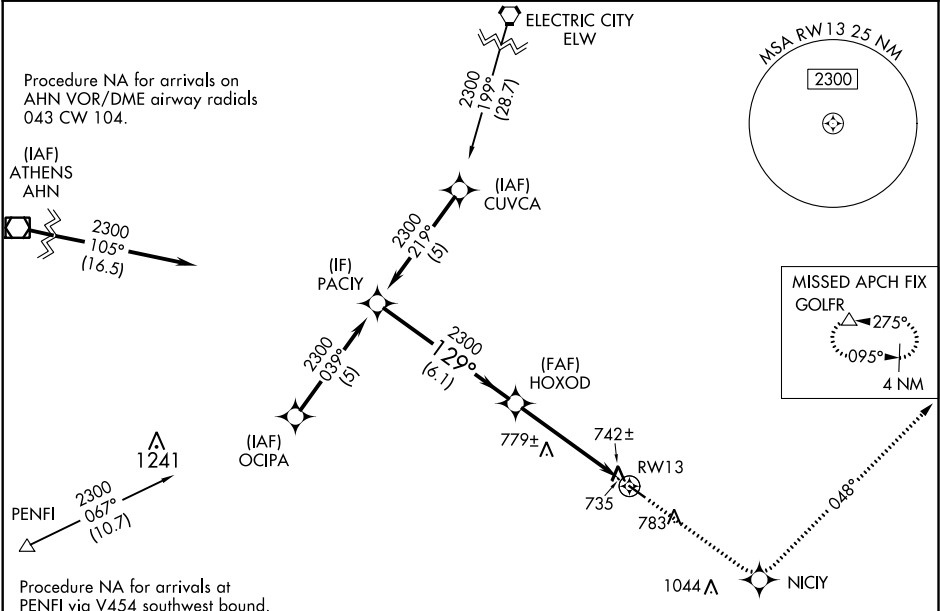
WASHINGTON-WILKES COUNTY (IIY)

Baro-VNAV NA when using Athens altimeter setting. For uncompensated Baro-VNAV systems, LNAV/VNAV NA below -16°C (4°F) or above 47°C (116°F). DME/DME RNP-0.3 NA.

Visibility reduction by helicopters NA. When local altimeter setting not received, use Athens altimeter setting and increase LPV DA to 1082, LNAV/VNAV DA to 1098, and all MDA 100 feet; increase LPV all Cats visibility ¼ mile, LNAV/VNAV all Cats visibility ½ mile, and LNAV Cat C visibility ¼ mile.

MISSED APPROACH:  
Climb to 2400 direct N1C1Y and via 048° track to GOLFR and hold.

AWOS-3 <b>118.375</b>	AUGUSTA APP CON★ <b>126.8 270.3</b>	UNICOM <b>122.7 (CTAF) 0</b>
--------------------------	--	---------------------------------



ELEV 646

TDZE 646

PAC1Y

HOXOD

2400

N1C1Y

tr 048°

GOLFR

2300

129°

2300

RW13

GP 3.00°

TCH 33

6.1 NM

5 NM

CATEGORY	A	B	C	D
LPV DA	996-1¼	350 (400-1¼)		NA
LNAV/VNAV DA	1012-1¼	366 (400-1¼)		NA
LNAV MDA	1040-1	394 (400-1)		NA
CIRCLING	1080-1 434 (500-1)	1100-1 454 (500-1)	1100-1½ 454 (500-1½)	NA

MIRL Rwy 13-31 0

129° to RW13

4020 X 72

-0.3% UP