

WAAS CH <b>61006</b> <b>W13A</b>	APP CRS <b>133°</b>	Rwy Idg <b>5219</b> TDZE <b>797</b> Apt Elev <b>808</b>
----------------------------------------	------------------------	---------------------------------------------------------------

RNAV (GPS) RWY 13

ATLANTA RGNL FALCON FIELD (F'F'C)

RNP APCH

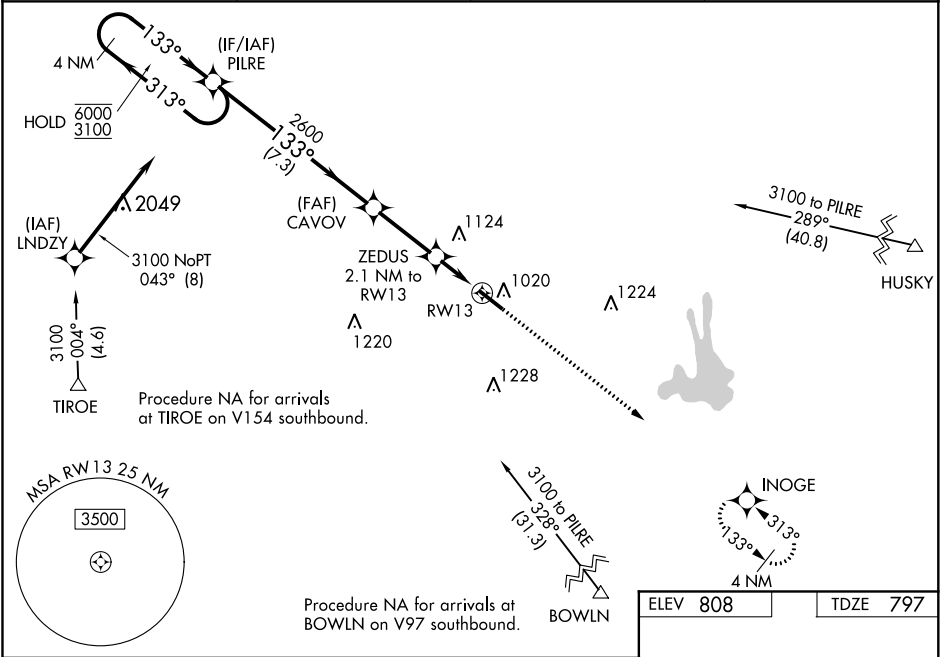
▼

⚠

Rwy 13 helicopter visibility reduction below 1 SM NA.  
For uncompensated Baro-VNAV systems, LNAV/VNAV NA below -8°C or above 54°C. Straight-in Rwy 13 NA at night, Circling Rwy 13 NA at night.

MISSED APPROACH: Climb to 3000 direct INOGE and hold.

ASOS <b>118.525</b>	ATLANTA APP CON <b>119.8 354.125</b>	CLNC DEL <b>119.8</b>	UNICOM <b>123.05 (CTAF) 0</b>
------------------------	-----------------------------------------	--------------------------	----------------------------------



4 NM Holding Pattern		VGSI and RNAV glidepath not coincident. (VGSI Angle 3.50/TCH 38).		3000	INOGE
CATEGORY	A	B	C	D	
LPV DA	1184-1 1/8		387 (400-1 1/8)		
LNAV/VNAV DA	1232-1 1/4		435 (500-1 1/4)		
LNAV MDA	1260-1 463 (500-1)		1260-1 3/8 463 (500-1 3/8)		
CIRCLING	1320-1 512 (600-1)		1440-1 3/4 632 (700-1 3/4) 1540-2 1/4 732 (800-2 1/4)		REIL Rwy 13 0 MIRL Rwy 13-31 0