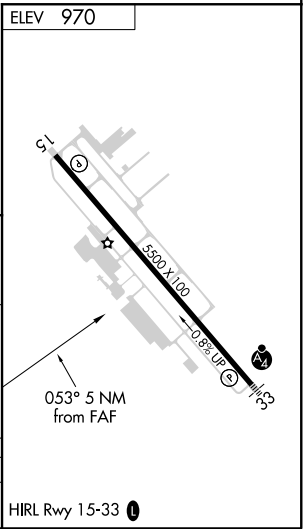
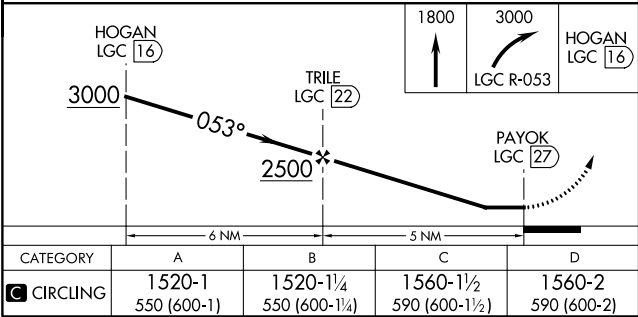
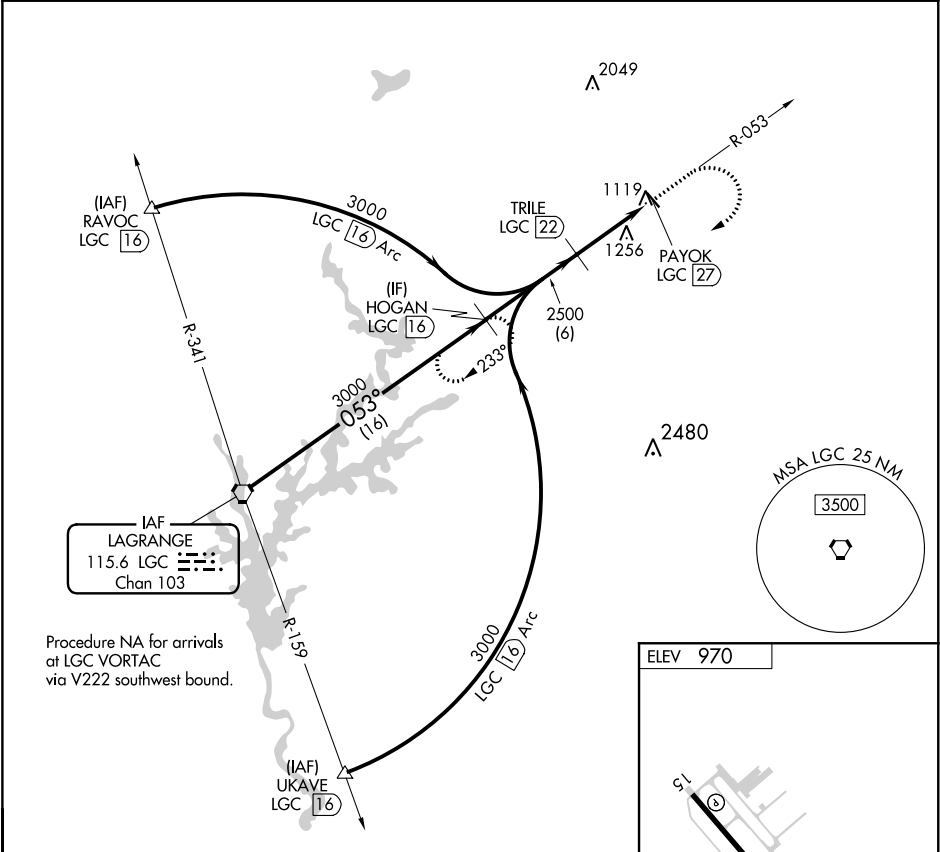


VORTAC LGC 115.6 Chan 103	APP CRS 053°	Rwy Idg TDZE Apt Elev N/A N/A 970
---	------------------------	---

VOR-A
NEWNAN COWETA COUNTY (CCO)

DME required.	MISSED APPROACH: Climb to 1800 then climbing right turn to 3000 via LGC VORTAC R-053 to HOGAN/16 DME and hold.
---------------	--

AWOS-3PT 118.975	ATLANTA APP CON 119.8 354.125	CLNC DEL 119.8	GCO 121.725	UNICOM 122.7 (CTAF) 0
----------------------------	---	--------------------------	-----------------------	---------------------------------



SE-4, 31 DEC 2020 to 28 JAN 2021

SE-4, 31 DEC 2020 to 28 JAN 2021