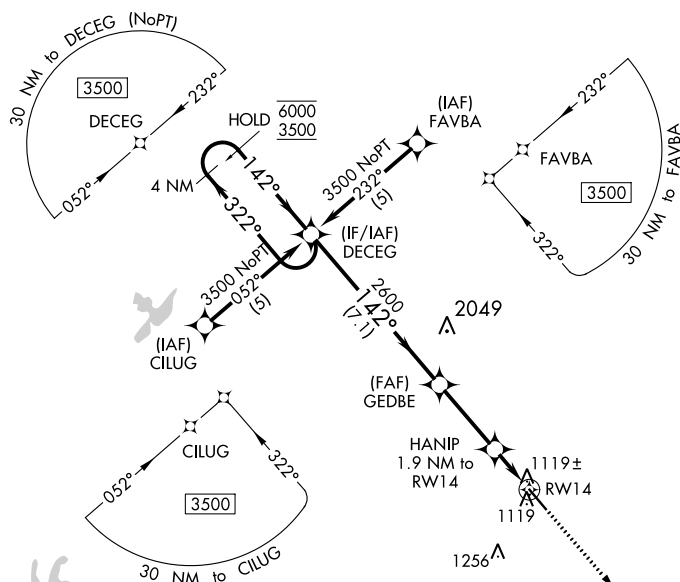


RNAV (GPS) RWY 14  
NEWNAN COWETA COUNTY (CCO)

**T**

For uncompensated Baro-VNAV systems, LNAV/VNAV NA below -16°C or above 47°C. Rwy 14 helicopter visibility reduction below  $\frac{3}{4}$  SM NA.

**MISSED APPROACH:** Climb to 3500 direct KACEL and hold.

UNICOM  
122.7 (CTAF) **L**

### MISSED APCH FIX



TDZE 970

4 NM  
Holding Pattern

VGSI and RNAV glidepath not coincident  
(VGSI Angle 3.00/TCH 40).

3500	KACEL
------	-------

114



1


\*INAV only

ERG (V only)

A to

4

RW14



0.2 NM

D
---

---

---

---

410 (500-1¼)

Year	1990	1991	1992	1993	1994
1990	1.0	1.0	1.0	1.0	1.0
1991	1.0	1.0	1.0	1.0	1.0
1992	1.0	1.0	1.0	1.0	1.0
1993	1.0	1.0	1.0	1.0	1.0
1994	1.0	1.0	1.0	1.0	1.0

1560-2

590 (600-2)

NE

NE

6'W

ATLANTA, GEORGIA  
Amdt 1A 08NOV18

33°19'N-84°46'W

NEWNAN COWETA COUNTY (CCO)  
RNAV (GPS) RWY 14