

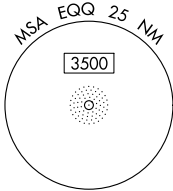
LOC I-CCO	APP CRS	Rwy Idg	5500
110.75	322°	TDZE	952
		Apt Elev	970

ILS or LOC RWY 32
NEWNAN COWETA COUNTY (C'CO)

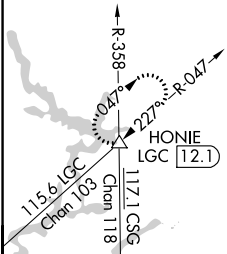
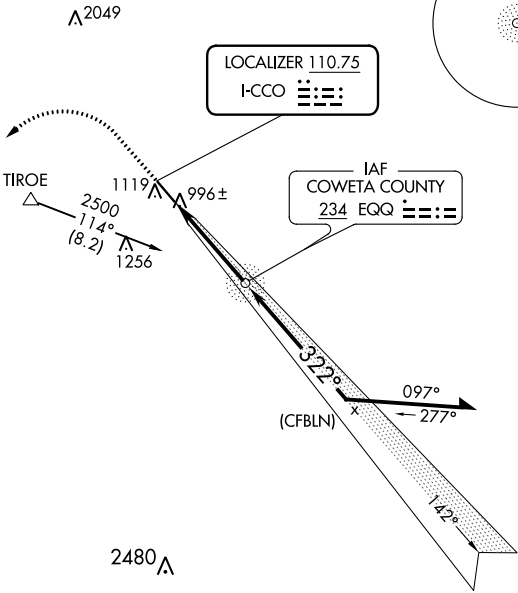
ADF required	MALSF	MISSED APPROACH: Climb to 1800 then climbing left turn to 4000 on LGC VORTAC R-047 to HONIE INT/LGC 12.1 DME and hold.
Rwy 32 helicopter visibility reduction below 3/4 SM NA. Inop table does not apply.		

AWOS-3PT 118.975	ATLANTA APP CON 119.8 354.125	CLNC DEL 119.8	GCO 121.725	UNICOM 122.7 (CTAF)
---------------------	----------------------------------	-------------------	----------------	------------------------

ALTERNATE
MISSED APCH FIX
COWETA COUNTY
234 EQQ



Procedure NA for arrival at
TIROE on V154 northwest bound.



ELEV 970	TDZE 952
HIRL Rwy 15-33	

Knots	60	90	120	150	180
Min:Sec	3:54	2:36	1:57	1:34	1:18

1800	4000	HONIE	EQQ	VGSI and ILS glidepath not coincident (VGSI Angle 3.00/TCH 49).
GS 3.00° TCH 36				
CATEGORY	A	B	C	D
S-ILS 32	1202-1 250 (300-1)			
S-LOC 32	1260-1 308 (300-1)			
CIRCLING	1420-1 450 (500-1)		1540-1½ 570 (600-1½)	1600-2 630 (700-2)

SE-4, 31 DEC 2020 to 28 JAN 2021

SE-4, 31 DEC 2020 to 28 JAN 2021