

APP CRS	Rwy Idg	5495
181°	TDZE	436
	Apt Elev	436

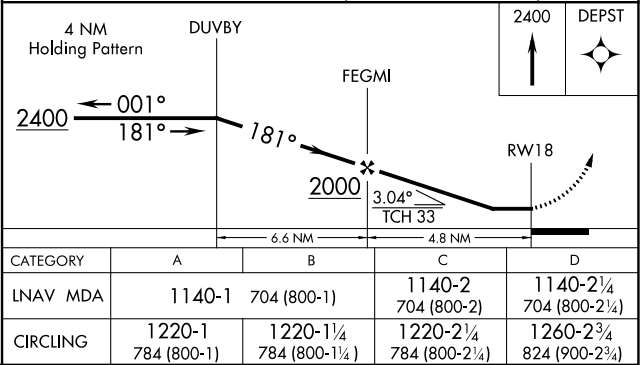
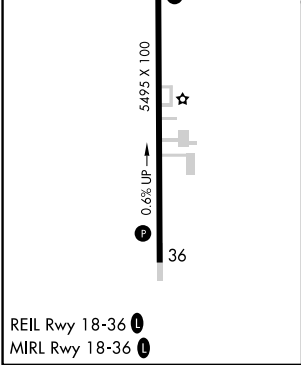
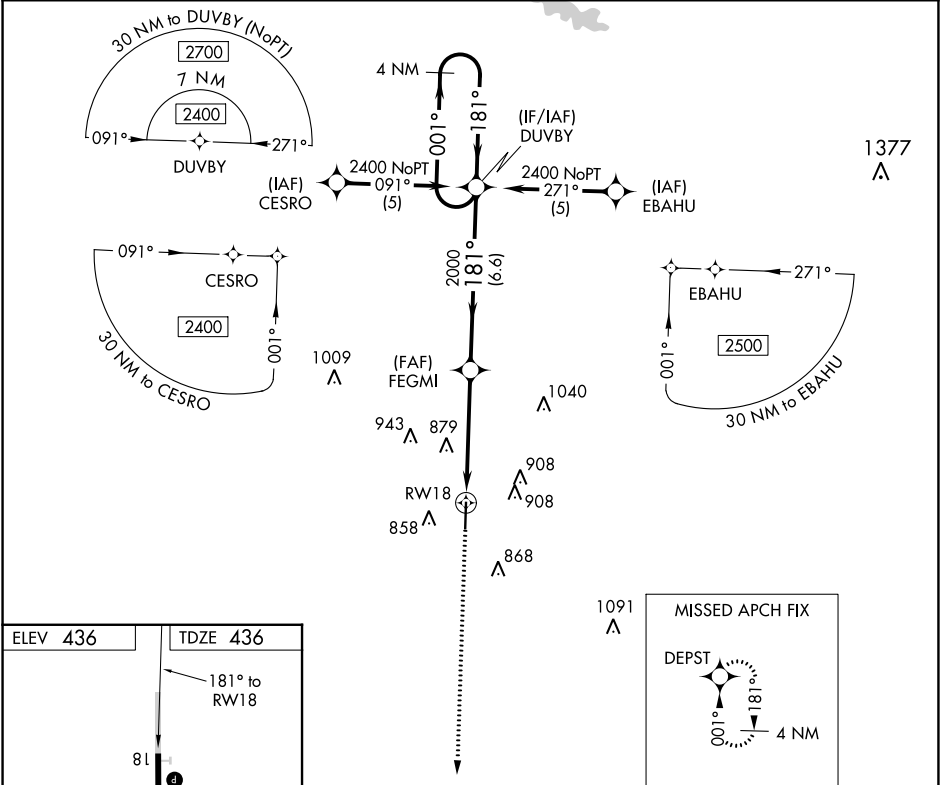
RNAV (GPS) RWY 18
MARION COUNTY-RANKIN FITE (HAB)

⚠ **NA**

DME/DME RNP-0.3 NA. Helicopter visibility reduction below 1 SM NA. Obtain local altimeter setting on CTAF. When not received, use Tupelo altimeter setting and increase all MDA 120 feet, increase LNAV MDA visibility Cat B ¼ mile, Cat C, D ½ mile and Circling visibility Cats A, D ¼ mile, Cat C ½ mile. Rwy 18 Straight-in and Circling minimums NA at night.

MISSED APPROACH:
Climb to 2400 direct DEPST and hold.

MEMPHIS CENTER 127.1 269.4	UNICOM 122.8 (CTAF) 0
--------------------------------------	---------------------------------



SE-4, 31 DEC 2020 to 28 JAN 2021

SE-4, 31 DEC 2020 to 28 JAN 2021