



|         |         |          |
|---------|---------|----------|
| NDB BHC | APP CRS | Rwy Idg  |
| 376     | 089°    | 5003     |
|         |         | TDZE     |
|         |         | 201      |
|         |         | Apt Elev |
|         |         | 201      |

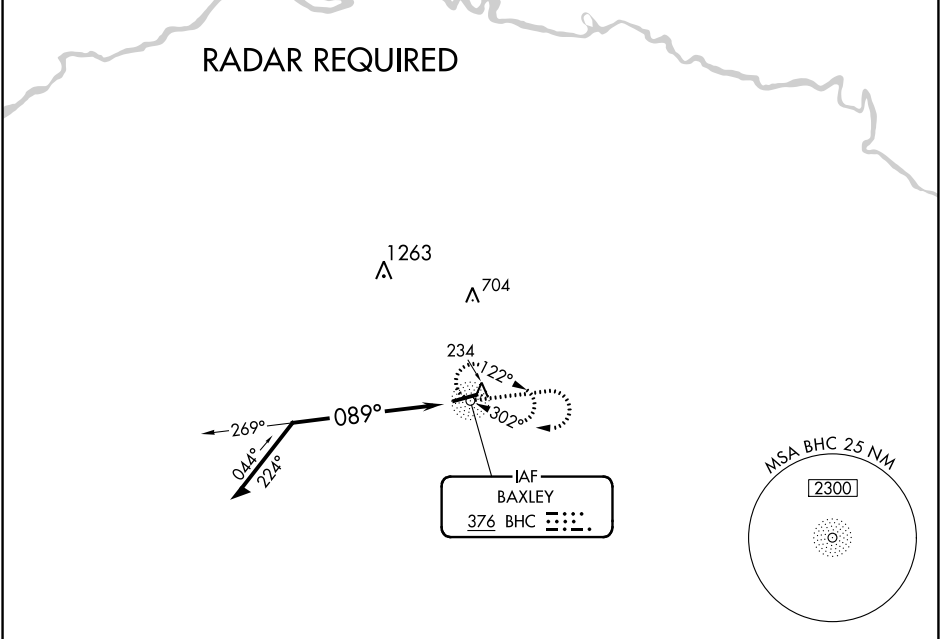
NDB RWY 8  
BAXLEY MUNI (BHC)



Helicopter visibility reduction below 3/4 SM NA. When local altimeter setting not received, use Alma altimeter setting and increase all MDA 40 feet.

MISSED APPROACH: Climb to 1600 then climbing right turn to 2000 direct BHC NDB and hold.

|                   |  |                          |
|-------------------|--|--------------------------|
| AWOS-3PT<br>118.2 | JACKSONVILLE CENTER<br>127.575 269.025 | UNICOM<br>122.8 (CTAF) 0 |
|-------------------|--|--------------------------|



ELEV 201

TDZE 201

Remain within 10 NM

2000

269°

089°

6000

1600

2000

BHC

5003 X 75

089° to BHC NDB

| CATEGORY | A     | B           | C      | D            |
|----------|-------|-------------|--------|--------------|
| S-8      | 800-1 | 599 (600-1) | 800-1¾ | 599 (600-1¾) |
| CIRCLING | 800-1 | 599 (600-1) | 800-1¾ | 800-2        |

MIRL Rwy 8-26 0

SE-4, 31 DEC 2020 to 28 JAN 2021

SE-4, 31 DEC 2020 to 28 JAN 2021