

WAAS
CH **97603**
W14A

APP CRS
135°

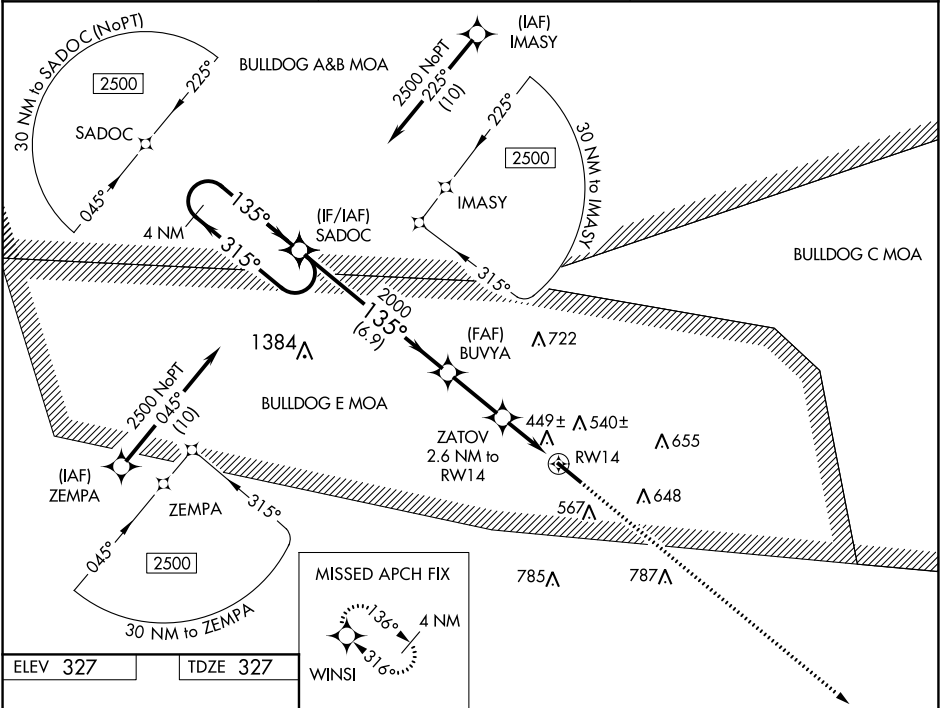
Rwy Idg
TDZE **327**
Apt Elev **327**

RNAV (GPS) RWY 14
EAST GEORGIA RGNL (SBO)

▼ Baro-VNAV and VDP NA when using Vidalia altimeter setting. For uncompensated Baro-VNAV systems, LNAV/VNAV NA below -15°C (5°F) or above 54°C (130°F). When local altimeter setting not received, use Vidalia altimeter setting and increase LPV DA to 708, LNAV/VNAV DA to 698, and all MDA 80 feet, increase LPV and LNAV/VNAV all Cats visibility ¼ SM, LNAV Cats C/D visibility ⅓ SM, Circling Cat C visibility ½ SM, and Circling Cat D visibility ¼ SM. Rwy 14 helicopter visibility reduction below ¼ SM NA. DME /DME RNP-0.3 NA.

MISSED APPROACH:
Climb to 2500 direct
WINSI and hold.

AWOS-3 133.375	ATLANTA CENTER 127.95 343.75	UNICOM 122.975 (CTAF) 0
--------------------------	--	-----------------------------------



ELEV 327	TDZE 327
HIRL Rwy 14-32 0	
MISSED APCH FIX	
WINSI	
4 NM Holding Pattern	
SADOC	
2500	
315°	
135°	
GP 3.00°	
TCH 42	
2000	
*1180	
*LNNAV only	
*1 NM to RWY14	
RWY14	
6.9 NM	
2.5 NM	
1.6 NM	
1 NM	
CATEGORY	A
LPV DA	643-1
LNAV/ VNAV DA	633-1
LNAV MDA	700-1
CIRCLING	900-1
	573 (600-1)
	920-1
	593 (600-1)
	920-1½
	593 (600-1½)
	920-2
	593 (600-2)