

LOC I-BZQ	APP CRS	Rwy Idg	5701
111.5	320°	TDZE	179
		Apt Elev	187

ILS or LOC RWY 32

STATESBORO-BULLOCH COUNTY (TBR)

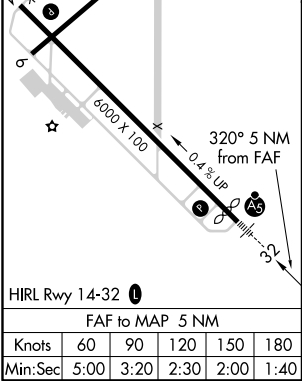
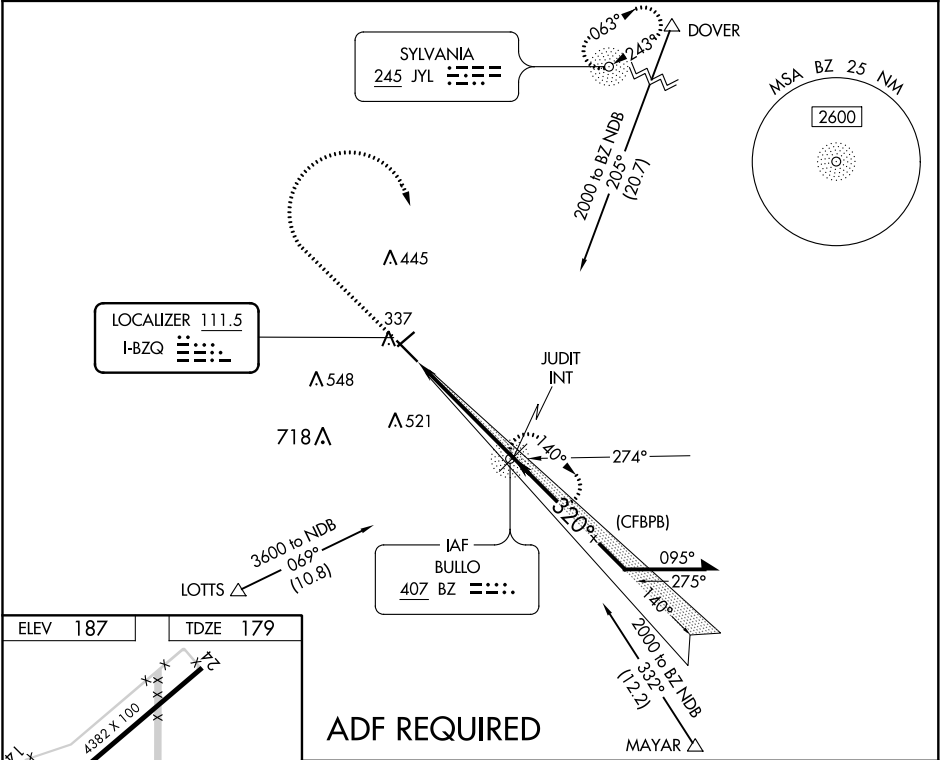
⚠

Inop table does not apply to S-ILS 32. ADF required. When local altimeter setting not received, use Sylvania altimeter setting and increase all DA 28 feet and increase all MDA 40 feet, increase Circling Cat C visibility ¼ mile. Helicopter visibility reduction below ¾ SM NA.

MALSR

MISSED APPROACH: Climb to 800 then climbing right turn to 2000 direct BULLO NDB and hold.

AWOS-3 119.025	SAVANNAH APP CON ★ 118.4 354.0	UNICOM 122.725 (CTAF) 0
-------------------	-----------------------------------	----------------------------



ADF REQUIRED

800	2000	BZ	BZ NDB		Remain with 10 NM
			JUDIT INT 140°	2000	
			1800	320°	
			1800		GS 3.00° TCH 49
5 NM					
CATEGORY	A	B	C	D	
S-ILS 32	433-¾		254 (300-¾)		
S-LOC 32	640-¾	461 (500-¾)	640-1	461 (500-1)	
CIRCLING	640-1	840-1	840-1¾	860-2¼	
	453 (500-1)	653 (700-1)	653 (700-1¾)	673 (700-2¼)	