

WAAS CH <b>49219</b> <b>W16A</b>	APP CRS <b>160°</b>	Rwy Idg <b>5000</b> TDZE <b>573</b> Apt Elev <b>586</b>
--	------------------------	---

RNAV (GPS) RWY 16

SHELBY COUNTY (EET)

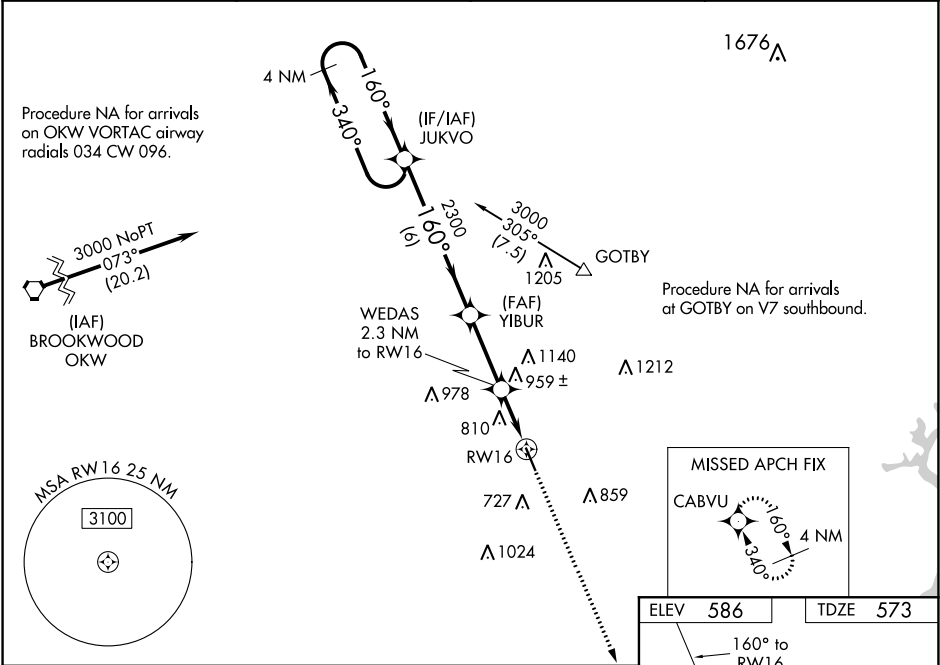
▼

⚠

DME/DME RNP-0.3 NA. Visibility reduction by helicopters NA. When local altimeter setting not received, use Birmingham altimeter setting and increase all DA 63 feet and all MDA 80 feet; increase LPV all Cats, LNAV/VNAV all Cats and LNAV Cats C/D and Circling Cats C/D visibilities ¼ mile. Baro-VNAV NA when using Birmingham altimeter setting. For uncompensated Baro-VNAV systems, LNAV/VNAV NA below -16°C (4°F) or above 47°C (116°F).

MISSED APPROACH: Climb to 3000 direct CABVU and hold.

ASOS <b>134.325</b>	BIRMINGHAM APP CON <b>123.8 256.8</b>	GCO <b>121.725</b>	UNICOM <b>122.7</b> (CTAF) <b>0</b>
------------------------	--	-----------------------	--



4 NM Holding Pattern		JUKVO		VGSI and RNAV glidepath not coincident (VGSI Angle 3.50/TCH 57).		3000	CABVU
3000		←340° 160°→		YIBUR 2300		* LNAV only	
GP 3.04° TCH 52		160°		2300		WEDAS 2.3 NM to RW16	
		6 NM		2.9 NM		RW16	
				*1360			
CATEGORY	A	B	C	D			
LPV DA	931-1¼ 358 (400-1¼)						
LNAV/VNAV DA	1176-2 603 (600-2)						
LNAV MDA	1220-1	647 (700-1)	1220-1¾ 647 (700-1¾)	1220-2 647 (700-2)			
CIRCLING	1220-1	634 (700-1)	1220-1¾ 634 (700-1¾)	1220-2 634 (700-2)			

