

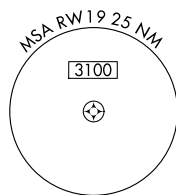
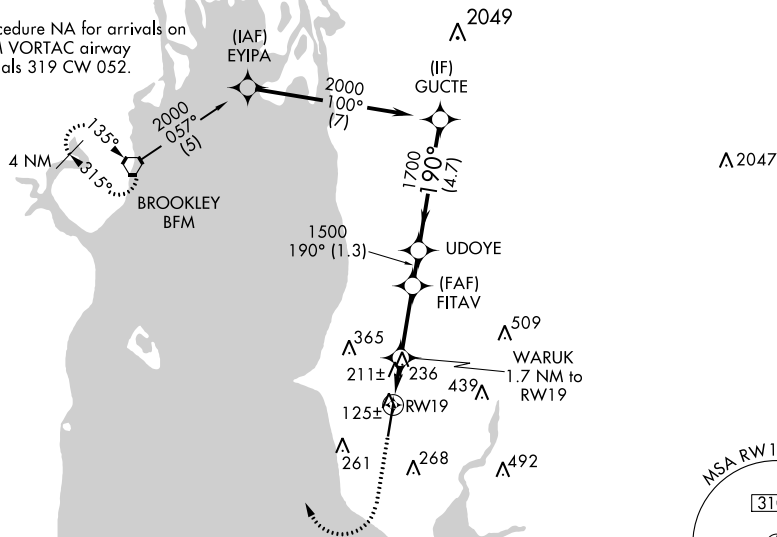
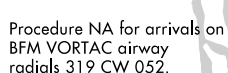
WAAS CH 99313 W19A	APP CRS 190°	Rwy Idg 6604 TDZE 91 Apt Elev 91
--	------------------------	---

RNAV (GPS) RWY 19

T Baro-VNAV NA when using Mobile Downtown altimeter setting. For uncompensated Baro-VNAV systems, LNAV/VNAV NA below -15°C (5°F) or above 43°C (109°F). **A** DME/DME RNP-0.3 NA. VDP NA with Mobile Downtown altimeter setting. When local altimeter setting not received, use Mobile Downtown altimeter setting and increase all DA 42 feet and all MDA 60 feet and increase LPV and LNAV/VNAV all Cats visibility $\frac{1}{2}$ mile and LNAV Cats C and D visibility $\frac{1}{4}$ mile.

MISSED APPROACH: Climb to 1500 then climbing right turn to 2000 direct BFM Vortac and hold.

AWOS-3PT 118.425	MOBILE APP CON ★ 118.5 269.3	UNICOM 123.0 (CTAF) 0
----------------------------	--	---------------------------------



ELEV 91

TDZE 91

190° to RW19

61

d


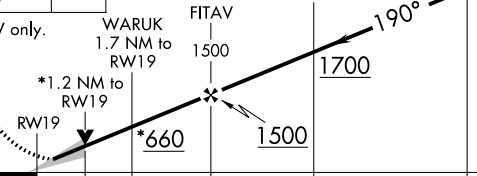
6604 X 100

1

P

HIRL Rwy 1-19 L

REIL Rwy 1 and 19 L

1500 ↑	2000 ↗	BFM 					GUCTE 2000	Procedure Turn NA	GP 3.00° TCH 35
*LNAV only.									
CATEGORY	A		B		C		D		
LPV DA			341-7/8		250 (300-7/8)				
LNAV/ VNAV DA			513-1½		422 (500-1½)				
LNAV MDA	500-1 409 (500-1)				500-1½ 409 (500-1½)				
CIRCLING	560-1 469 (500-1)				580-1½ 489 (500-1½)		660-2 569 (600-2)		