

WAAS
CH **42605**
W05A

APP CRS
044°

Rwy Idg
TDZE **1275**
Apt Elev **1277**

RNAV (GPS) RWY 5
LEE GILMER MEMORIAL (GVL)

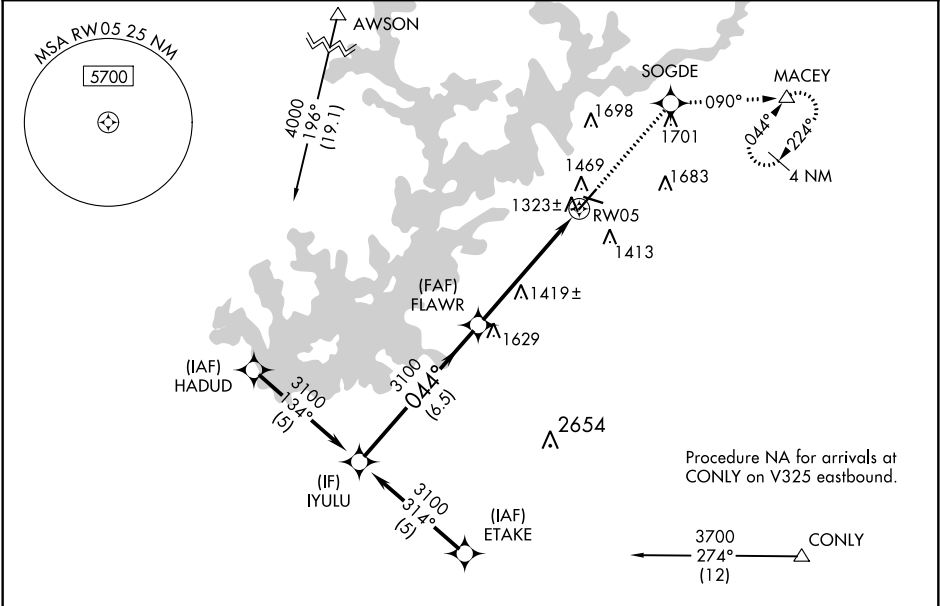
RNP APCH.

For uncompensated Baro-VNAV systems, LNAV/VNAV NA below -17°C or above 46°C. When local altimeter setting not received, use Jefferson altimeter setting: increase all DA/MDA 80 feet; increase LPV and LNAV/VNAV all Cats visibilities ¼ SM, LNAV Cat D and Circling Cat C/D visibility ½ SM. Baro-VNAV and VDP NA when using Jefferson altimeter setting. Circling Rwy 11, 29 NA at night.

MALSRL

MISSED APPROACH:
Climb to 4000 direct SOGDE and on 090° track to MACEY and hold, continue climb-in-hold to 4000.

ASOS 126.475	ATLANTA APP CON ★ 132.475 291.1	GCO 121.725	UNICOM 123.075 (CTAF) 0
------------------------	---	-----------------------	-----------------------------------



ELEV 1277

TDZE 1275

VGSI and RNAV glidepath not coincident (VGSI Angle 3.00/TCH 30).

Procedure Turn NA

GP 3.00° TCH 43

3100 — 044° — 3100

6.5 NM 4 NM 1.5 NM

FLAWR

4000 SOGDE

090° tr

MACEY

*1.5 NM to RW05

*LNAV only.

RW05

044° to RW05

CATEGORY	A	B	C	D
LPV DA	1525-1 250 (300-1)			
LNAV/VNAV DA	1760-1¾ 485 (500-1¾)			
LNAV MDA	1780-1 505 (600-1)	1780-1½ 505 (600-1½)		
CIRCLING	1880-1 603 (700-1)	1880-1¾ 603 (700-1¾)	2060-2½ 783 (800-2½)	

HIRL Rwy 5-23 0