

NDB FKV
365

APP CRS
045°

Rwy Idg
TDZE
Apt Elev
5496
1275
1277

NDB RWY 5

LEE GILMER MEMORIAL (GVL)

⚠

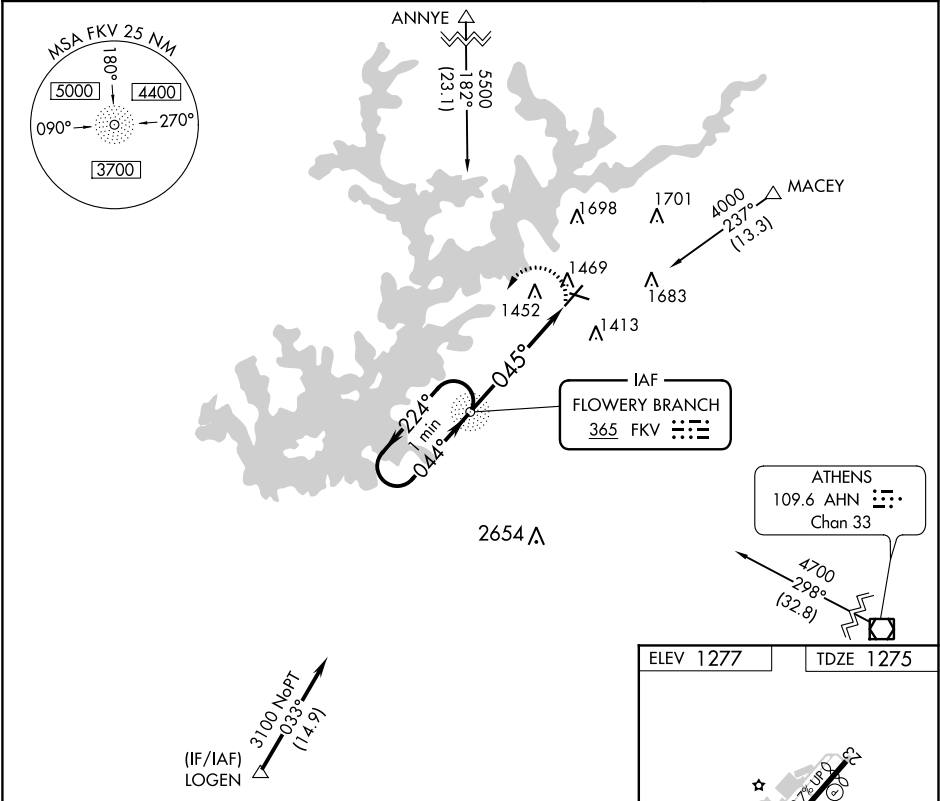
When local altimeter setting not received, use Jefferson altimeter setting and increase all MDA 80 feet, increase S-5 Cats C/D and Circling Cat C/D visibility ¼ SM. Rwy 5 helicopter visibility reduction below ¾ SM NA. Circling Rwy 11, 29 NA at night.

MALS

MISSED APPROACH:

Climbing left turn to 3100
direct FKV NDB and hold.

ASOS 126.475	ATLANTA APP CON★ 132.475 291.1	GCO 121.725	UNICOM 123.075 (CTAF) 0
------------------------	--	-----------------------	-----------------------------------



VGSI and descent angles not coincident (VGSI Angle 3.00/TCH 30).

One Minute Holding Pattern

3100

224°

044°

045°

3.31°

TCH 30

5.1 NM

3100

FKV

ELEV 1277

TDZE 1275

HIRL Rwy 5-23 0

FAF to MAP 5.1 NM

Knots	60	90	120	150	180
Min:Seq	5:06	3:24	2:33	2:02	1:42

CATEGORY	A	B	C	D
S-5	1820-1	545 (600-1)	1820-1½ 545 (600-1½)	1820-1¾ 545 (600-1¾)
CIRCLING	1820-1	543 (600-1)	1820-1½ 543 (600-1½)	2040-2½ 763 (800-2½)