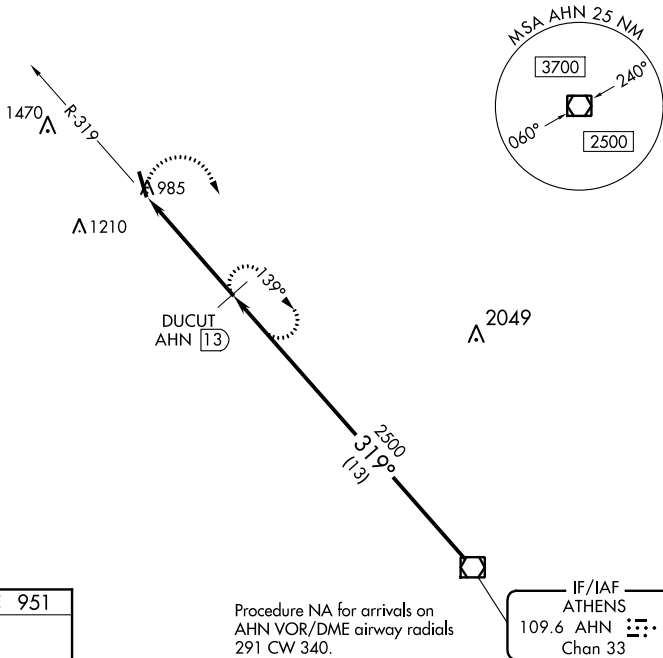


19115

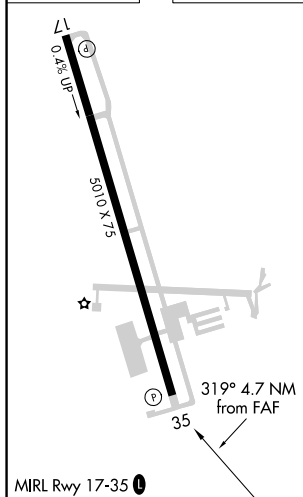
VOR/DME RWY 35
JACKSON COUNTY (JCA)

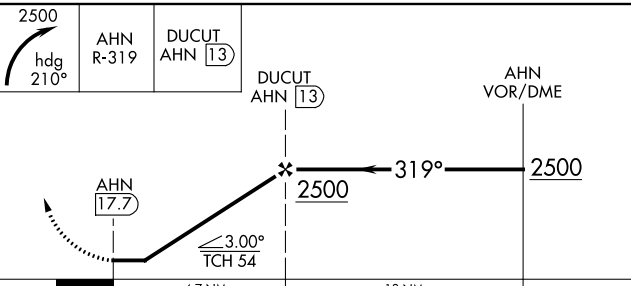
MISSED APPROACH: Climbing right turn to 2500 on heading 210° and AHN VOR/DME R-319 to DUCUT/AHN 13 DME and hold.

AWOS-3PT 118.125	ATLANTA APP CON ★ 132.475 291.1	UNICOM 122.8 (CTAF) 0
----------------------------	---	---------------------------------



ELEV 951		TDZE 951
----------	--	----------



					
CATEGORY	A		B	C	D
S-35	1380-1		429 (500-1)	1380-1¼	429 (500-1¼)
C CIRCLING	1440-1		489 (500-1)	1520-1½ 569 (600-1½)	1520-2 569 (600-2)

JACKSON COUNTY (JCA)
VOR/DME RWY 35