

WAAS CH 61231 W36A	APP CRS 002°	Rwy Idg TDZE 648 Apt Elev 686	5422 648 686
--	------------------------	---	---

RNAV (GPS) RWY 36

THOMAS C RUSSELL FIELD (ALX)

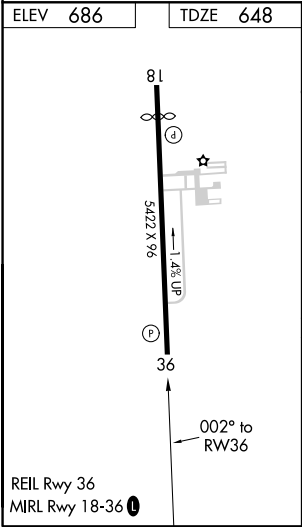
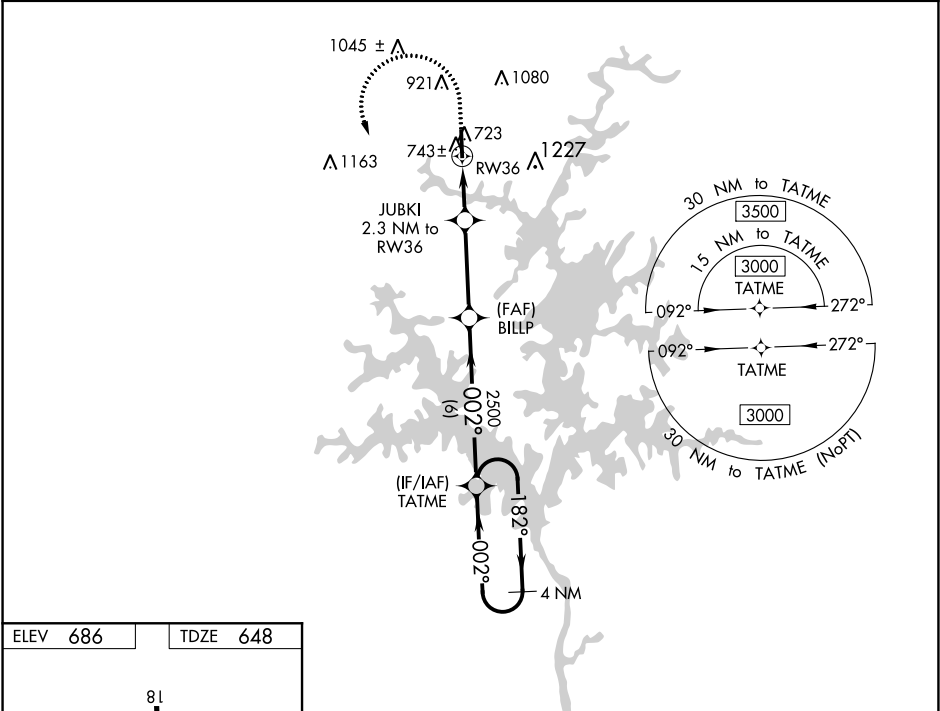
▼


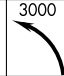

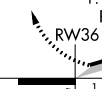

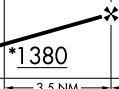
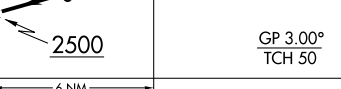

▲

For uncompensated Baro-VNAV systems, LNAV/VNAV NA below -16°C (4°F) or above 54°C (130°F). DME/DME RNP-0.3 NA.

MISSED APPROACH: Climb to 1100 then climbing left turn to 3000 direct TATME and hold.

AWOS-3PT 118.325	MONTGOMERY APP CON ★ 121.2 269.05	UNICOM 122.7 (CTAF) ①
----------------------------	---	---------------------------------



1100	3000	TATME	VGSI and RNAV glidepath not coincident.		
					
*LNAV only.		JUBKI 2.3 NM to RW36	BILLP 2500	TATME 4 NM Holding Pattern	
					
1.1		1.2	3.5 NM	6 NM	
CATEGORY		A	B	C	D
LPV	DA	898-1		250 (300-1)	
LNAV/ VNAV	DA	940-1½		292 (300-1½)	
LNAV	MDA	1000-1 352 (400-1)		1000-1½ 352 (400-1½)	
 CIRCLING	1180-1 494 (500-1)	1240-1 554 (600-1)	1540-2½ 854 (900-2½)	1540-2¾ 854 (900-2¾)	