

WAAS
CH **82104**
W02A

APP CRS
019°

Rwy Idg **6506**
TDZE **300**
Apt Elev **303**

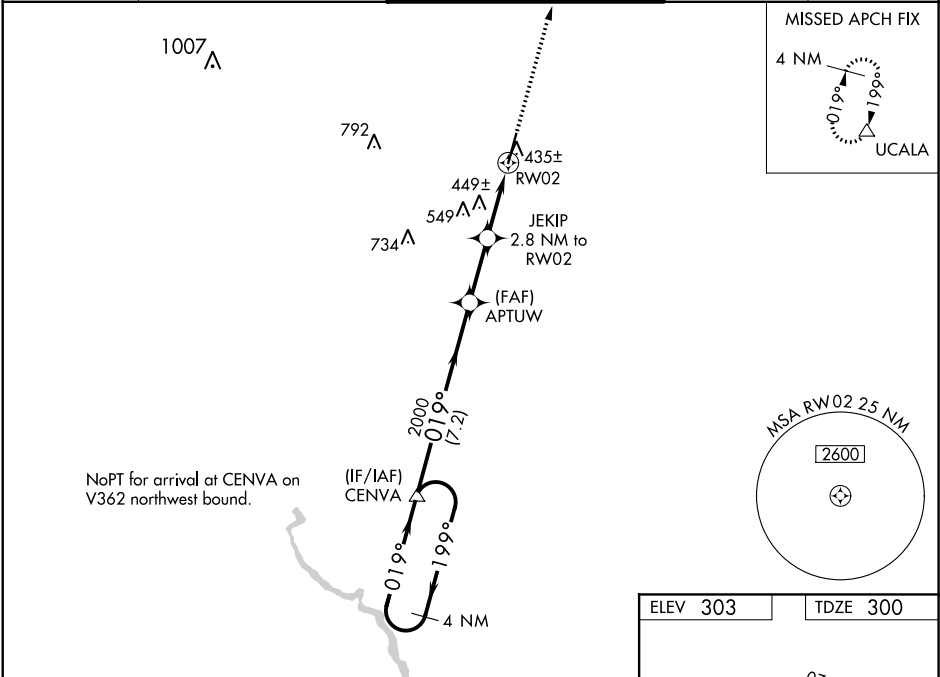
RNAV (GPS) RWY 2
HEART OF GEORGIA RGNL (E2M)

Baro-VNAV NA when using Dublin altimeter setting. For uncompensated Baro-VNAV systems, LNAV/VNAV NA below -15°C (5°F) or above 54°C (130°F). When local altimeter setting not received, use Dublin altimeter setting and increase all DA 52 feet and all MDA 60 feet; increase LNAV/VNAV all Cats, LNAV Cat C/D and Circling Cat C visibility ¼ miles. DME/DME RNP-0.3 NA. VDP NA with Dublin altimeter setting.

MALSR

MISSED APPROACH:
Climb to 2100 direct UCALA and hold.

ATIS 119.425	JACKSONVILLE CENTER 127.575 269.025	HEART OF GEORGIA TOWER ★ 124.55 (CTAF) 0	GND CON 121.175	UNICOM 122.95
------------------------	---	--	---------------------------	-------------------------



VGSI and RNAV glidepath not coincident (VGSI Angle 3.00/TCH 45).

2100 UCALA

4 NM Holding Pattern

CENVA

APTUW

JEKIP 2.8 NM to RW02

*LNAV only.

GP 3.00° TCH 49

2000

199°

019°

2000

*1220

*1.1 NM to RW02

RW02

7.2 NM

2.4 NM

1.7 NM

1.1

CATEGORY	A	B	C	D
LPV DA		500-½	200 (200-½)	
LNAV/VNAV DA		595-½	295 (300-½)	
LNAV MDA	700-½	400 (400-½)	700-¾	400 (400-¾)
CIRCLING	760-1 457 (500-1)	820-1 517 (600-1)	900-1½ 597 (600-1½)	900-2 597 (600-2)

ELEV 303

TDZE 300

REIL Rwy 20

HIRL Rwy 2-20