

VORTAC EUF	APP CRS	Rwy Idg	5000
109.2	356°	TDZE	285
Chan 29		Apt Elev	285

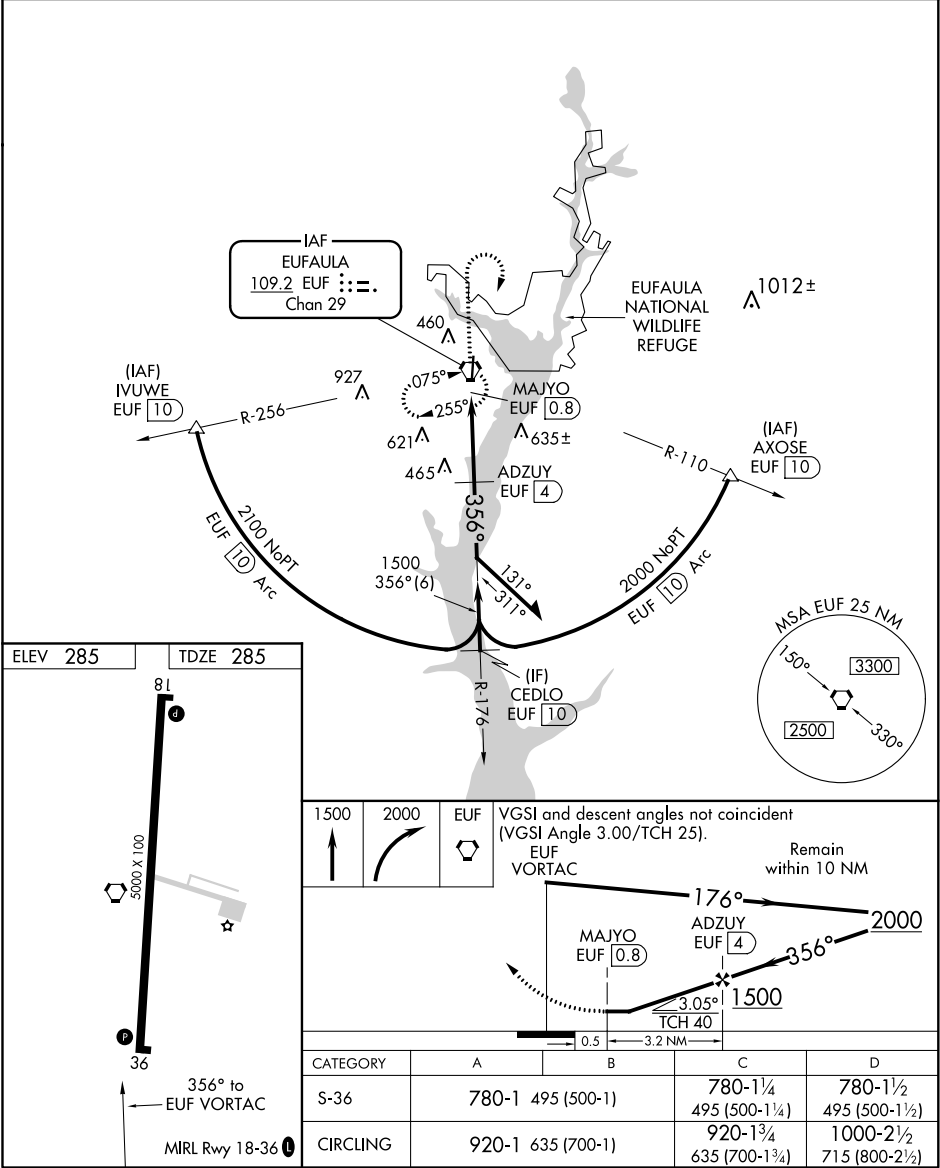
VOR/DME RWY 36
WEEDON FIELD (EUF)

▼ Use Clayton altimeter setting; when not received, use Columbus, GA altimeter setting and increase all MDAs 40 feet and S-36 Cat C and D visibility ¼ mile. Rwy 36 helicopter visibility reduction below ¾ SM NA.

▲ NA

MISSED APPROACH: Climb to 1500 then climbing right turn to 2000 direct EUF VORTAC and hold.

ASOS 128.325	11A AWOS-3 118.775	ATLANTA APP CON ★ 125.5 323.1	CLNC DEL 134.25 339.8	UNICOM 122.8 (CTAF) 0
------------------------	------------------------------	---	---------------------------------	---------------------------------



SE-4, 31 DEC 2020 to 28 JAN 2021

SE-4, 31 DEC 2020 to 28 JAN 2021