

WAAS CH 86723 W18A	APP CRS 188°	Rwy Idg TDZE Apt Elev	5000 285 285
--	------------------------	-----------------------------	---

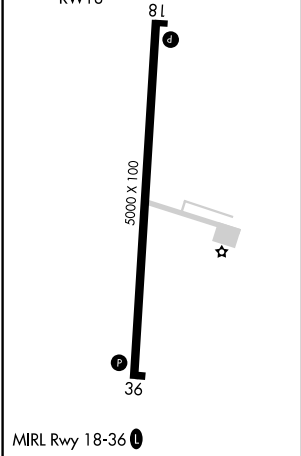
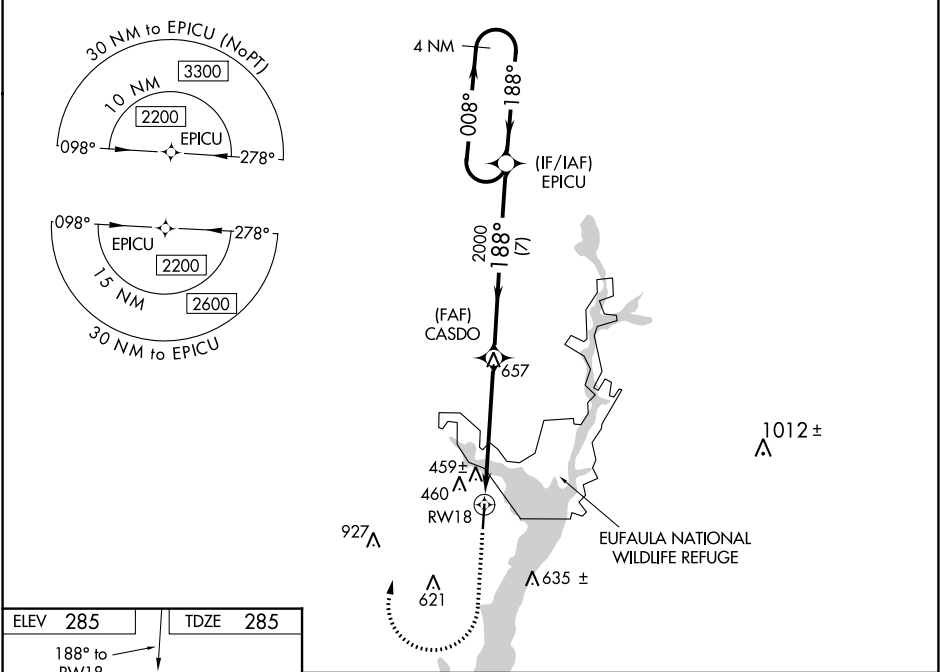
RNAV (GPS) RWY 18
WEEDON FIELD (EUF)

⚠ DME/DME RNP-0.3 NA. Baro-VNAV NA. Use Clayton altimeter setting; when not received, use Columbus, GA altimeter setting and increase all DA 33 feet and all MDA 40 feet; increase LPV all Cats and LNAV Cats C and D and Circling Cat C visibility 1/8 mile and Circling D visibility 1/4 mile.

⚠NA

MISSED APPROACH: Climb to 1300 then climbing right turn to 2200 direct EPICU and hold.

ASOS 128.325	11A AWOS-3 118.775	ATLANTA APP CON ★ 125.5 323.1	CLNC DEL 134.25 339.8	UNICOM 122.8 (CTAF) 📶
------------------------	------------------------------	---	---------------------------------	--



1300	2200	EPICU	VGSI and RNAV glidepath not coincident (VGSI Angle 3.00/TCH 26).		4 NM Holding Pattern
CASDO		2000	188°	2200	008°
RWY 18		2000	188°	2200	188°
5.3 NM		7 NM	GP 3.00° TCH 40		
CATEGORY	A	B	C	D	
LPV DA	599-1		314 (400-1)		
LNAV/VNAV DA	706-1 1/2		421 (500-1 1/2)		
LNAV MDA	940-1 655 (700-1)		940-1 7/8 655 (700-1 7/8)		
CIRCLING	940-1 655 (700-1)		940-1 7/8 655 (700-1 7/8)		1000-2 1/4 715 (800-2 1/4)

SE-4, 31 DEC 2020 to 28 JAN 2021

SE-4, 31 DEC 2020 to 28 JAN 2021