

NDB BMW	APP CRS	Rwy Idg	4600
404	312°	TDZE	922
		Apt Elev	934

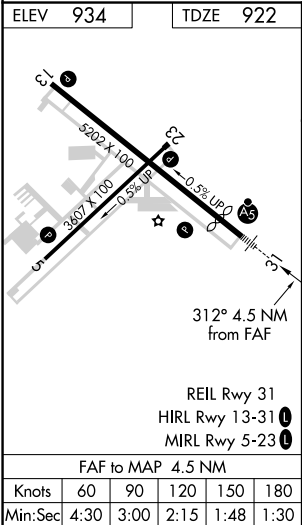
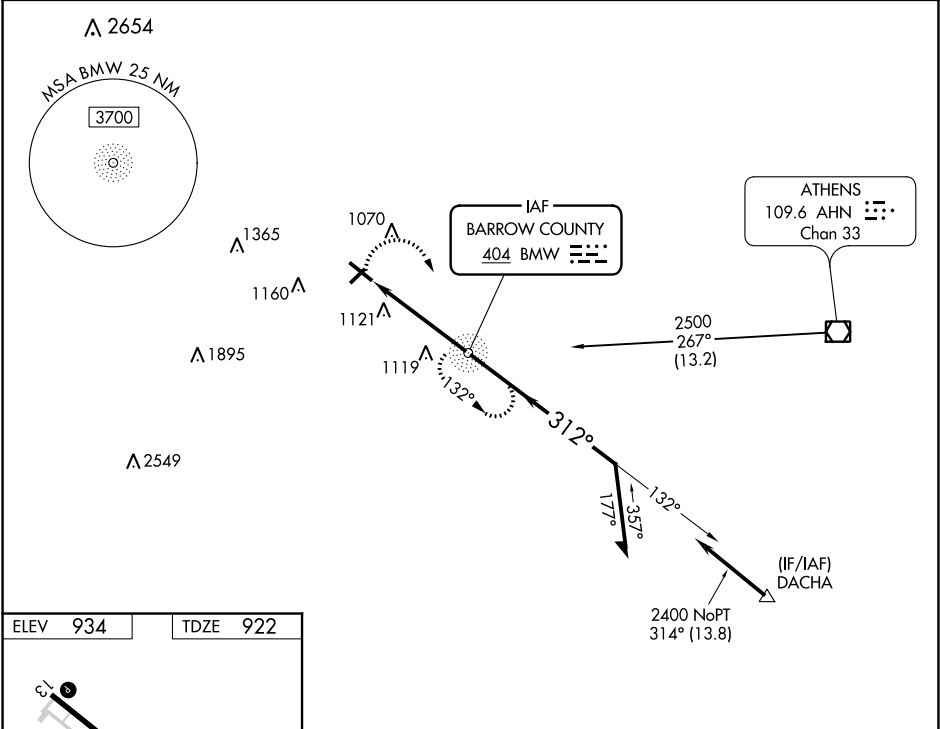
NDB RWY 31
BARROW COUNTY (WDR)

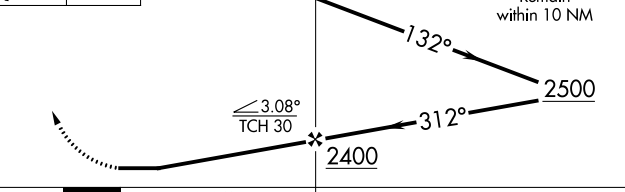
▼ For inop ALS, increase S-31 Cat A/B visibility to 1 SM. Circling Rwy 13, 23 NA at night. Rwy 31 helicopter visibility reduction below ¾ SM NA.

MALSR

MISSED APPROACH: Climbing right turn to 2500 direct BMW NDB and hold.

AWOS-3 118.575	ATLANTA APP CON ★ 132.475 291.1	UNICOM 123.0 (CTAF) 0
-------------------	------------------------------------	--------------------------



2500	BMW	VGSI and descent angles not coincident. (VGSI Angle 3.00/TCH 45).				
						
CATEGORY	A		B		C	D
S-31	1480-¾ 558 (600-¾)				1480-1⅛ 558 (600-1⅛)	
CIRCLING	1480-1 548 (600-1)		1500-1 566 (600-1)		1500-1½ 566 (600-1½)	1500-2 566 (600-2)

SE-4, 31 DEC 2020 to 28 JAN 2021

SE-4, 31 DEC 2020 to 28 JAN 2021