

WAAS CH 90206 W24A	APP CRS 236°	Rwy Idg 5006 TDZE 308 Apt Elev 310
--	------------------------	---

RNAV (GPS) RWY 24

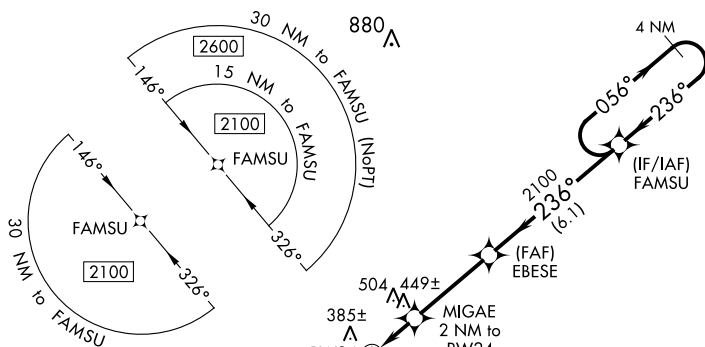
CRISP COUNTY-CORDELE (CKF)

RNP APCH.

V For uncompensated Baro-VNAV systems, LNAV/VNAV NA below -15°C or above 54°C. Rwy 24 helicopter visibility reduction below $\frac{3}{4}$ NA. Straight-in Rwy 24 NA at night. Circling Rwy 6, 24, 28 NA at night.

MISSED APPROACH: Climb to 2100 direct BUYAK and hold.

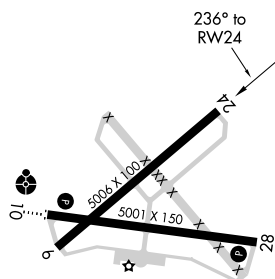
AWOS-3PT 119.325	JACKSONVILLE CENTER 125.75 226.8	UNICOM 123.050 (CTAF) 0
----------------------------	--	-----------------------------------



MISSED APCH FIX

BUYAK

ELEV 310	TDZE 308
----------	----------



2100	BUYAK
------	-------

*LNAV only.

1. *Journal of the American Medical Association*, 2000; 284: 2689-2695.

EBESE

MIGAE |

FAMSU

1

to


4

236

0.56

234

GP 3.00°
TCH 45

CATEGORY		A	B	C	D
LPV	DA	583-1		275 (300-1)	
LNAV/ VNAV	DA	584-1		276 (300-1)	
LNAV	MDA	700-1 392 (400-1)		700-1 $\frac{1}{8}$ 392 (400-1 $\frac{1}{8}$)	
 CIRCLING		800-1 490 (500-1)	820-1 510 (600-1)	1080-2 $\frac{1}{4}$ 770 (800-2 $\frac{1}{4}$)	1160-2 $\frac{3}{4}$ 850 (900-2 $\frac{3}{4}$)

MIRL Rwy 10-28 **L**REIL Rwys 10 and 28 **L**

CORDELE, GEORGIA

Amdt 1A 10SEP20

31°59'N-83°46'W

CRISP COUNTY-CORDELE (CKF)
RNAV (GPS) RWY 24

RNAV (GPS) RWY 24