

WAAS CH 65705 W03A	APP CRS 027°	Rwy ldg TDZE 996 Apt Elev 996	5008
--	------------------------	---	-------------

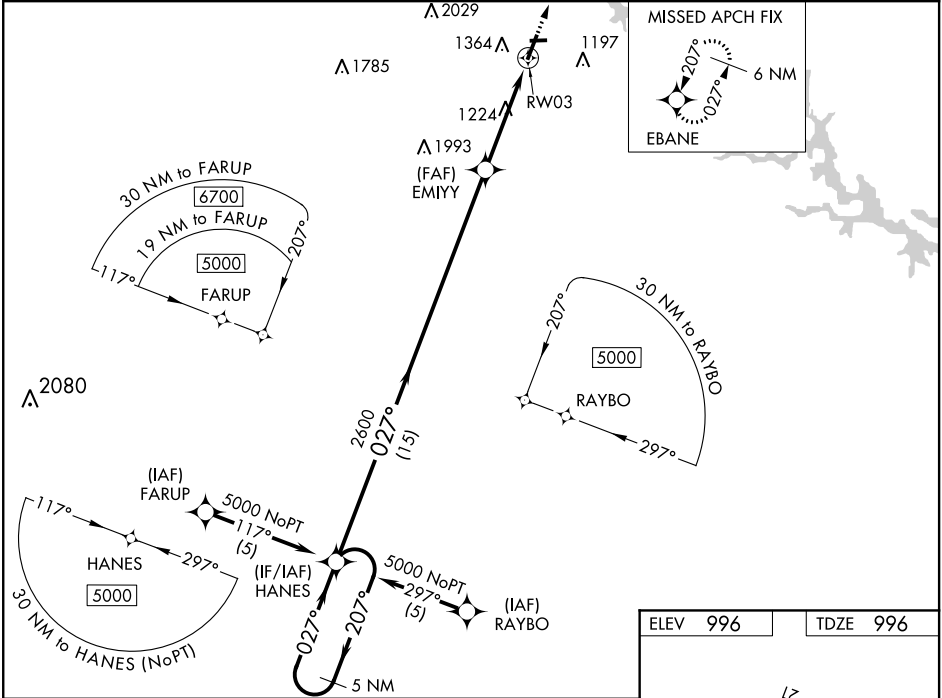
RNAV (GPS) RWY 3

TOCCOA RG LETOURNEAU FIELD (TOC)

Baro-VNAV and VDP NA when using Gainesville altimeter setting. For uncompensated Baro-VNAV systems, LNAV/VNAV NA below -8°C (18°F) or above 54°C (130°F). DME/DME RNP-0.3 NA. When local altimeter setting not received, use Gainesville altimeter setting and increase LPV DA to 1507 feet, LNAV/VNAV DA to 1859 and all MDA 120 feet. Increase LPV all Cats visibility ⅓ mile, increase LNAV Cat B visibility ¼ mile, Cats C/D ½ mile and Circling Cats A/B/C visibility ¼ mile. Helicopter visibility reduction below ⅓ SM NA.

MISSED APPROACH: Climb to 6600 direct EBANE and hold, continue climb-in-hold to 6600.

AWOS-3 119.625	ATLANTA CENTER 134.8 379.95	UNICOM 122.8 (CTAF) 0
--------------------------	---------------------------------------	---------------------------------



5 NM Holding Pattern

VGSI and RNAV glidepath not coincident (VGSI Angle 3.25/TCH 32).

GP 3.44° TCH 40

5000	207°	027°	027°	2600	*1.9 NM to RW03	*LNAV only
------	------	------	------	------	-----------------	------------

CATEGORY	A	B	C	D
LPV DA	1392-1⅞	396 (400-1⅞)		NA
LNAV/VNAV DA	1744-2½	748 (800-2½)		NA
LNAV MDA	1680-1	684 (700-1)	1680-2	684 (700-2)
CIRCLING	1720-1	724 (800-1)	1760-2¼ 764 (800-2¼)	2480-3 1484 (1500-3)

