

APP CRS  
**055°**

Rwy Idg **6500**  
TDZE **46**  
Apt Elev **46**

**RNAV (GPS) RWY 6L**

WRIGHT AAF (FORT STEWART)/MIDCOAST RGNL (LHW)

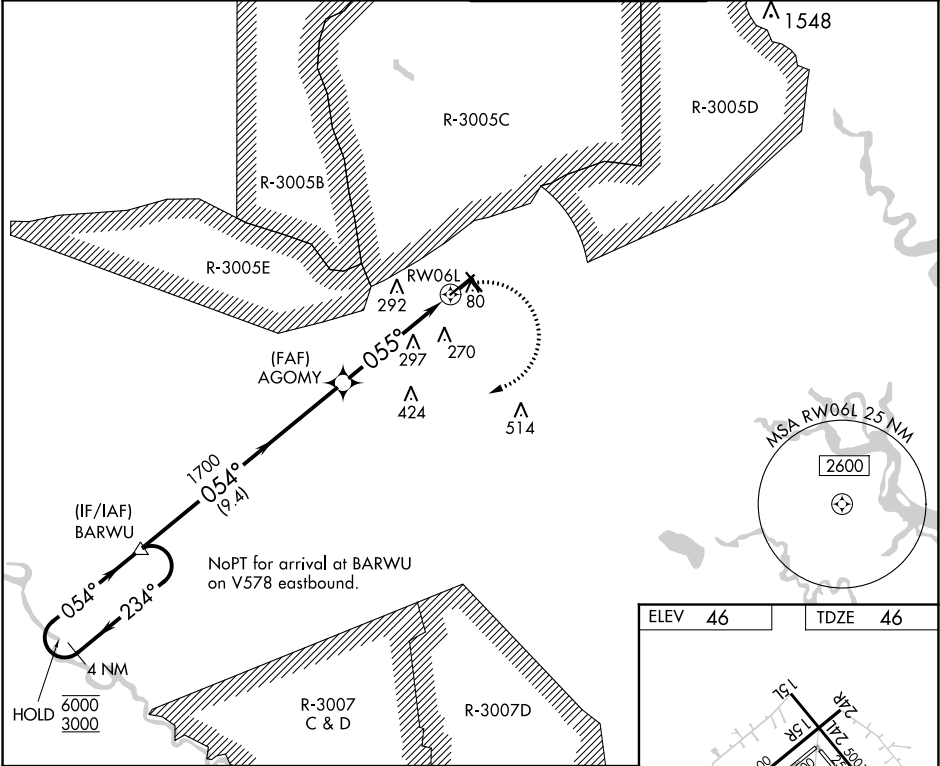
RNP APCH.  
RADAR required.

⚠

Circling NA northeast of Rwy 15L-33R. Rwy 6L helicopter visibility reduction below 1 SM NA. Procedure NA when R3005C/D or R3007C is active and LHW tower is closed. Straight-in/ Circling Rwy 6L NA at night and Circling Rwy 24R NA at night.

MISSED APPROACH: Climbing right turn to 3000 direct BARWU and hold.

ATIS ★ <b>118.475</b>	SAVANNAH APP CON★ <b>120.4 353.775</b>	WRIGHT TOWER ★ <b>126.25 (CTAF) 0 269.275</b>	GND CON <b>121.7 273.575</b>
--------------------------	---	--	---------------------------------



4 NM Holding Pattern

BARWU

AGOMY

3000 BARWU

6000 ← 234°

3000 054° →

054°

3.04° TCH 48

1700

055°

RWY 6L

9.4 NM

5 NM

CATEGORY	A	B	C	D
LNNAV MDA	600-1	554 (600-1)	600-1½	554 (600-1½)
CIRCLING	600-1 554 (600-1)	620-1 574 (600-1)	680-1¾ 634 (700-1¾)	680-2 634 (700-2)

HIRL Rwy 6L-24R, 15L-33R