

WAAS
CH **50440**
W33A

APP CRS
325°

Rwy Idg
TDZE **41**
Apt Elev **46**

RNAV (GPS) RWY 33R

WRIGHT AAF (FORT STEWART)/MIDCOAST RGNL (LHW)

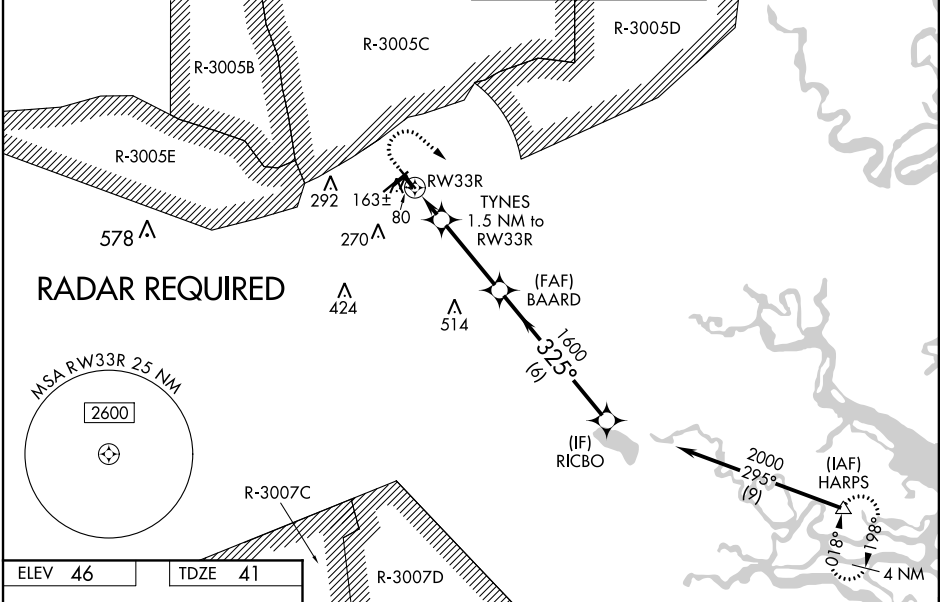
RNP APCH.

⚠

Circling to Rwy 6R, 24L, 15R, 33L, 6L, 24R NA at night. For uncompensated Baro-VNAV systems, LNAV/VNAV NA below -6°C or above 54°C. When local altimeter setting not received, use Savannah/Hilton Head Intl altimeter setting: increase LPV DA to 346 feet, LNAV/VNAV DA to 379 feet and all visibilities ½ mile; increase all MDAs 60 feet and LNAV and Circling Cats C and D visibility ¼ mile. Baro-VNAV NA when using Savannah Hilton Head Intl altimeter. Circling NA northeast of Rwy 15L-33R. Procedure NA when R-3005C/D or R-3007C is active and LHW Tower is closed.

MISSED APPROACH: Climb to 500 then climbing right turn to 4000 direct HARPS and hold.

ATIS ★ 118.475	SAVANNAH APP CON★ 120.4 353.775	WRIGHT TOWER ★ 126.25 (CTAF) 0 269.275	GND CON 121.7 273.575
--------------------------	---	--	---------------------------------



ELEV 46 TDZE 41

500 4000 HARPS

VGSI and descent angles not coincident (VGSI Angle 3.00/TCH 65).

*LNAV only.

RYW33R

TYNES 1.5 NM to RWY33R

BAARD 1600

RICBO 2000

GP 3.00° TCH 51

CATEGORY	A	B	C	D
LPV DA		291-1	250 (300-1)	
LNAV/VNAV DA		324-1	283 (300-1)	
LNAV MDA		420-1	379 (400-1)	
CIRCLING	560-1 514 (600-1)	620-1 574 (600-1)	660-1¾ 614 (700-1¾)	680-2 634 (700-2)