

|  |                        |   |
|--|------------------------|---|
| WAAS<br>CH <b>78338</b><br><b>W02A</b> | APP CRS<br><b>020°</b> | Rwy Idg<br>TDZE <b>299</b><br>Apt Elev <b>311</b> |
|--|------------------------|---|

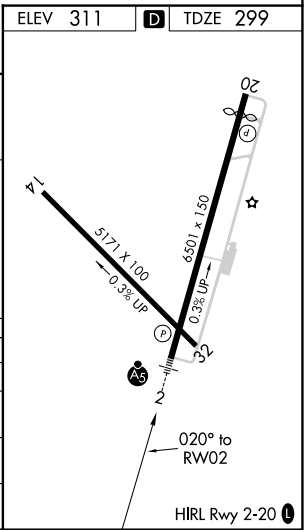
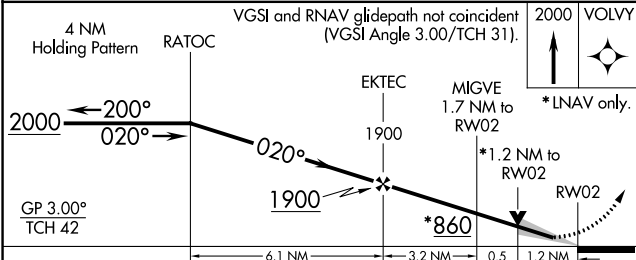
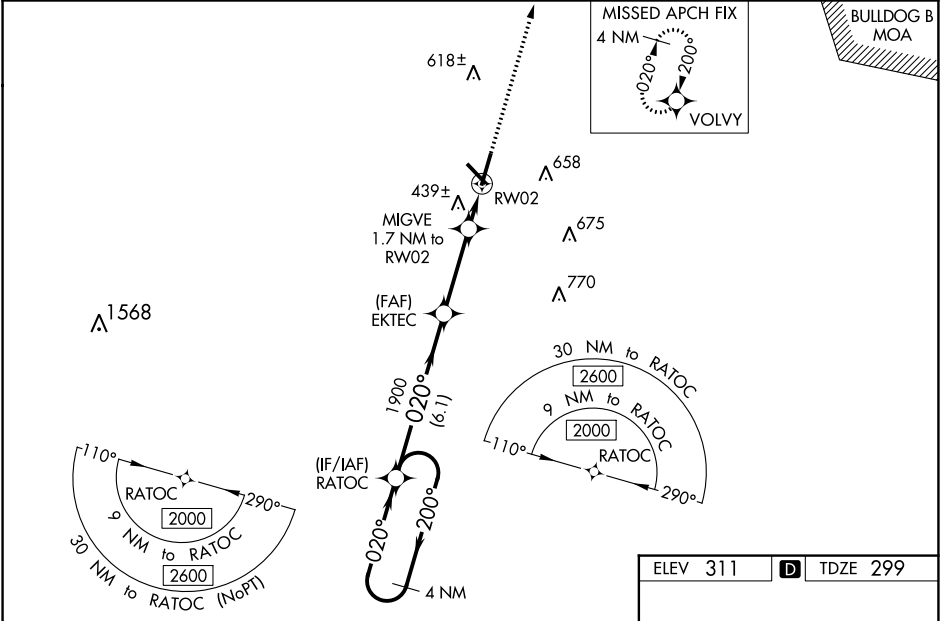
RNAV (GPS) RWY 2  
W H 'BUD' BARRON (DBN)

▼ Night landing: Rwy 32 NA. For uncompensated Baro-VNAV systems, LNAV/VNAV NA below -15°C (5°F) or above 54°C (130°F). Baro-VNAV and VDP NA when using Vidalia altimeter setting. DME/DME RNP-0.3 NA. When local altimeter setting not received, use Vidalia altimeter setting and increase LPV DA to 593 feet and LNAV/VNAV DA to 849 feet and all MDA 100 feet; increase LNAV/VNAV all Cats visibility ¾ mile and LNAV Cats C/D visibility and Circling Cats C/D visibility ¼ mile. For inop MALSR, increase LNAV Cat C/D visibility to 1 ½ mile. For inop MALSR when using Vidalia altimeter setting, increase LPV all Cats visibility to 1 mile, LNAV/VNAV all Cats visibility to 1 ½ mile and LNAV Cat C/D visibility to 1 ¾ mile.

MALSR  
A5

MISSED APPROACH:  
Climb to 2000 direct  
VOLVY and hold.

|                          |   |                                 |
|--------------------------|---|---------------------------------|
| AWOS-3<br><b>118.425</b> | ATLANTA APP CON ★<br><b>124.2 279.6</b> | UNICOM<br><b>122.7 (CTAF)</b> 0 |
|--------------------------|---|---------------------------------|



| CATEGORY     | A                     | B                 | C                     | D                          |
|--------------|-----------------------|-------------------|-----------------------|----------------------------|
| LPV DA       |                       | 499-1/2           | 200 (200-1/2)         |                            |
| LNAV/VNAV DA |                       | 755-1 1/8         | 456 (500-1 1/8)       |                            |
| LNAV MDA     | 700-1/2 401 (400-1/2) |                   | 700-3/4 401 (400-3/4) |                            |
| CIRCLING     | 760-1 449 (500-1)     | 780-1 469 (500-1) | 1020-2 709 (800-2)    | 1020-2 1/4 709 (800-2 1/4) |

SE-4, 31 DEC 2020 to 28 JAN 2021

SE-4, 31 DEC 2020 to 28 JAN 2021