

LOC/DME I-DBN	APP CRS	Rwy ldg	6300
109.1	020°	TDZE	299
Chan 28		Apt Elev	311

ILS or LOC RWY 2
W H 'BUD' BARRON (DBN)

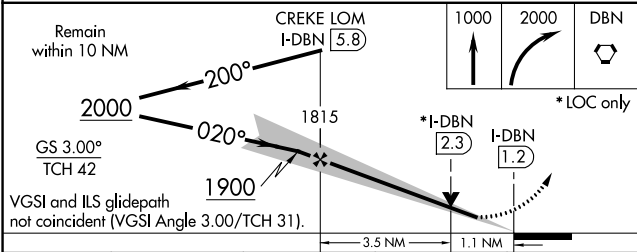
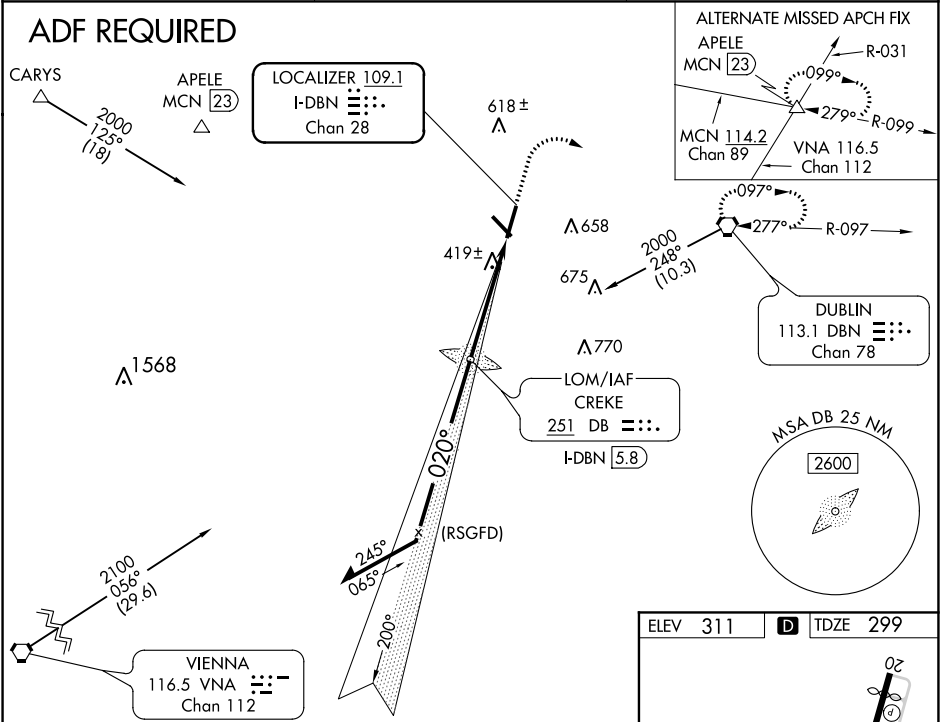
NA

When local altimeter setting not received, use Vidalia altimeter setting: increase all DA to 592; increase all MDAs 100 feet and visibility S-LOC Cat C and D ¼ SM, and Circling Cat C ½ SM, Cat D ½ SM. Night landing: Rwy 14, 32 NA. For inop MALSR, increase S-LOC 2 Cats C and D visibility to 1 ½ and when using Vidalia altimeter setting, increase S-ILS 2 all Cats visibility to 1 mile and S-LOC 2 Cats C and D visibility to 1 ½ mile.

MALSR

MISSED APPROACH:
Climb to 1000 then climbing right turn to 2000 direct DBN VORTAC and hold.

AWOS-3 118.425	ATLANTA APP CON ★ 124.2 279.6	UNICOM 122.7 (CTAF) 0
--------------------------	---	---------------------------------



CATEGORY	A	B	C	D
S-ILS 2	499-½ 200 (200-½)			
S-LOC 2	680-½ 381 (400-½)	680-¾ 381 (400-¾)		
CIRCLING	760-1 449 (500-1)	780-1 469 (500-1)	1020-2 709 (800-2)	1040-2¼ 729 (800-2¼)

