

WAAS CH <b>63139</b> <b>W11A</b>	APP CRS <b>111°</b>	Rwy ldg TDZE Apt Elev	<b>4000</b> <b>775</b> <b>777</b>
--	------------------------	-----------------------------	---

RNAV (GPS) RWY 11

AUBURN UNIVERSITY RGNL (AUO)

⚠

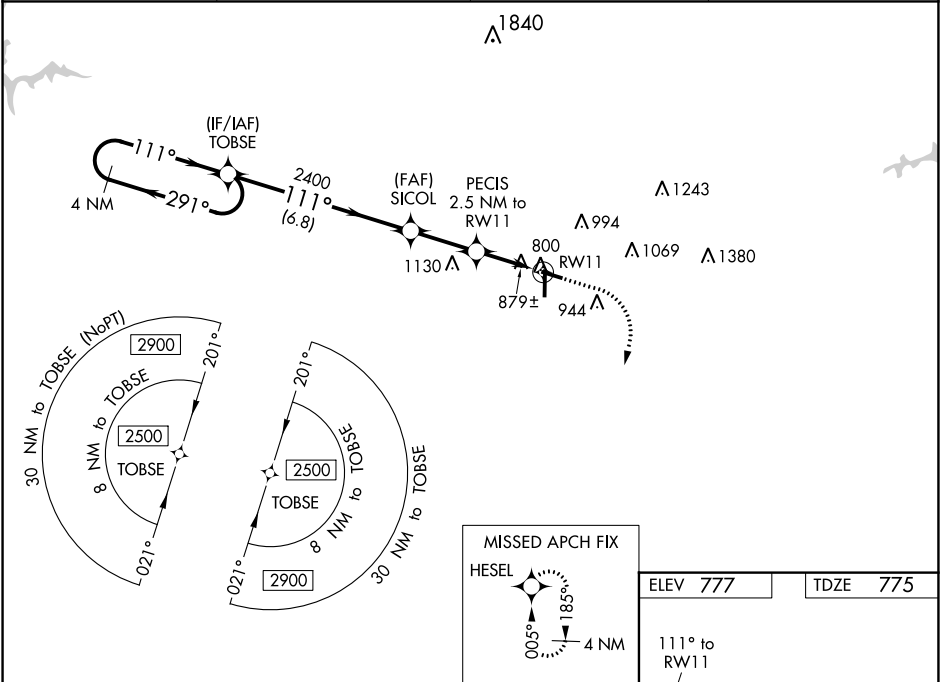
For uncompensated Baro-VNAV systems, LNAV/VNAV NA below -16°C (4°F) or above 54°C (130°F). Baro-VNAV and VDP NA when using Columbus altimeter setting.

⚠

DME/DME RNP-0.3 NA. When local altimeter setting not received, use Columbus altimeter setting: increase LPV DA to 1138 feet and visibility all Cats ¼ SM; increase LNAV/VNAV DA to 1173 feet and visibility all Cats ¾ SM; increase all MDA 120 feet and LNAV Cats C/D and Circling Cat C visibility ¼ SM and Circling Cat D visibility ½ SM.

MISSED APPROACH:  
Climb to 1200 then climbing right turn to 3000 direct HESEL and hold.

AWOS-3PT <b>132.575</b>	ATLANTA APP CON ★ <b>125.5 323.1</b>	CLNC DEL <b>118.7</b>	UNICOM <b>123.0 (CTAF) 0</b>
----------------------------	---	--------------------------	---------------------------------



4 NM Holding Pattern TOBSE		SICOL		PECIS 2.5 NM to RW11		*1.1 NM to RW11	
2500 ← 291°		2400		2400		1600	
GP 3.00° TCH 45		6.8 NM		2.5 NM		1.4 NM	
A		B		C		D	
LPV DA		1025-1		250 (300-1)			
LNAV/VNAV DA		1060-1		285 (300-1)			
LNAV MDA		1160-1		385 (400-1)		1160-1½ 385 (400-1½)	
CIRCLING		1280-1		1360-1		1380-1¾ 1480-2¼	
		503 (600-1)		583 (600-1)		603 (700-1¾) 703 (800-2¼)	

ELEV 777

TDZE 775

111° to RW11

81

4000 X 75

5264 X 100

0.9% UP

36

MIRL Rwy 11-29 0  
HIRL Rwy 18-36 0