

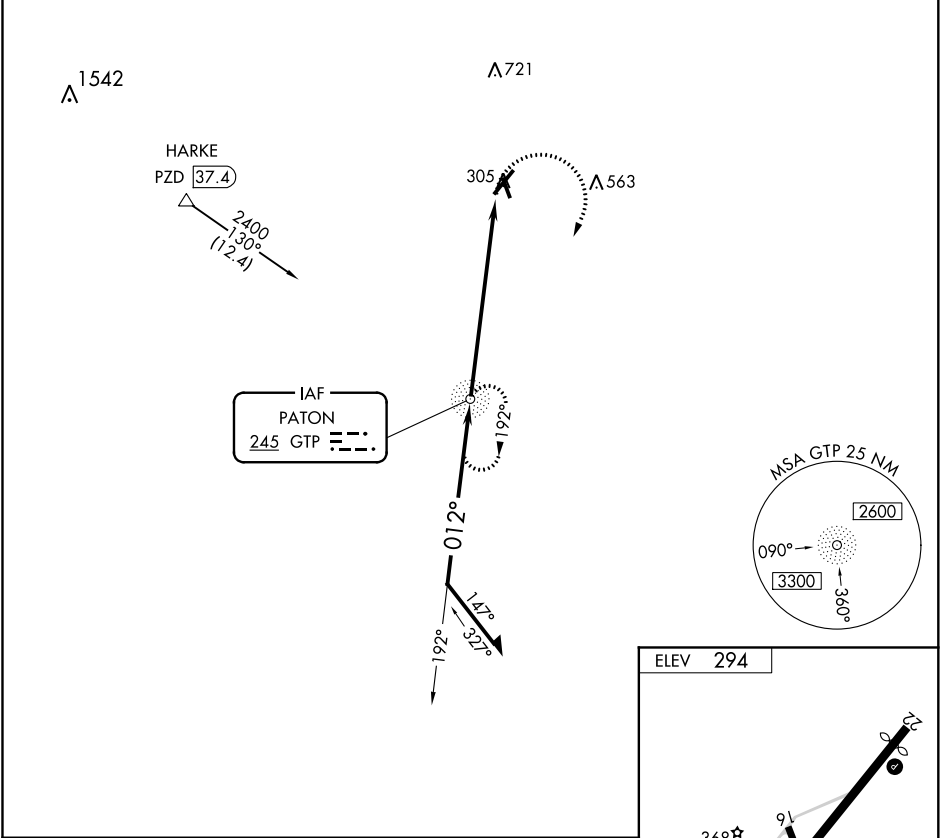
NDB GTP <b>245</b>	APP CRS <b>012°</b>	Rwy Idg TDZE Apt Elev	N/A N/A <b>294</b>
NDB-A MOULTRIE MUNI (MGR)			

**▼** When local altimeter setting not received, use Valdosta altimeter setting and increase all MDA 100 feet and visibilities Cat C ¼ SM and Cat D ½ SM.

**▲**

MISSED APPROACH: Climbing right turn to 2400 direct GTP NDB and hold.

AWOS-3PT <b>118.925</b>	VALDOSTA APP CON ★ <b>126.6 285.6</b>	UNICOM <b>122.8 (CTAF) 0</b>
----------------------------	--	---------------------------------



<div>Remain within 10 NM</div> <div><div><div>2400</div><div>192°</div><div>012°</div><div>2000</div><div>7.4 NM</div></div><div><div>2400</div><div>GTP</div><div>GTP NDB</div></div></div>					<div><div><div>368' x 100'</div><div>4000' x 100'</div><div>3678' x 75'</div><div>0.5% UP</div><div>0.5% UP</div><div>012° 7.4 NM from FAF</div><div>MIRL Rwy 4-22</div></div></div>								
CATEGORY	A		B		C		D		FAF to MAP 7.4 NM				
CIRCLING	860-1 566 (600-1)		860-1½ 566 (600-1½)		1080-2½ 786 (800-2½)		Knots 60 90 120 150 180						
							Min:Sec 7:24 4:56 3:42 2:58 2:28						

SE-4, 31 DEC 2020 to 28 JAN 2021

SE-4, 31 DEC 2020 to 28 JAN 2021