

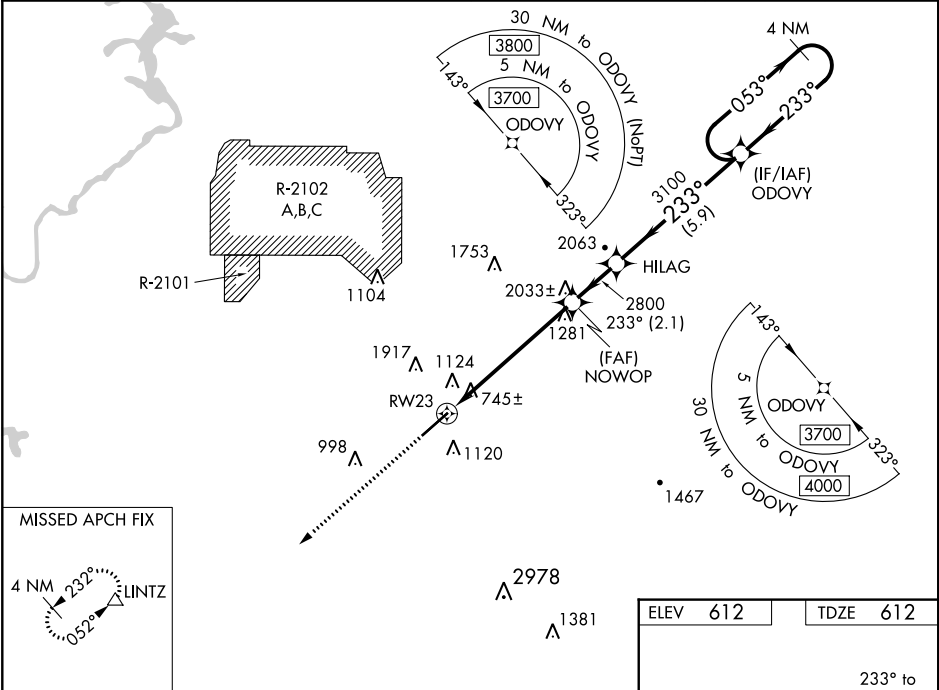
WAAS CH <b>58315</b> <b>W23A</b>	APP CRS <b>233°</b>	Rwy Idg TDZE <b>612</b> Apt Elev <b>612</b>
--	------------------------	---

RNAV (GPS) RWY 23  
ANNISTON RGNL (ANB)

**⚠** For uncompensated Baro-VNAV systems, LNAV/VNAV NA below -8°C (18°F) or above 54°C (130°F). Circling NA north of Rwy 5-23. Rwy 23 helicopter visibility reduction below ¾ NA. DME/DME RNP-0.3 NA. When local altimeter setting not received, use Gadsden altimeter setting: increase all DA 66 feet and all visibilities ½ SM; increase all MDAs 80 feet and Circling Cat A and C visibilities ¼ SM. Baro-VNAV and VDP NA when using Gadsden altimeter setting.

**MISSED APPROACH:**  
Climb to 3400 direct LINTZ and hold.

ASOS <b>119.675</b>	BIRMINGHAM APP CON <b>132.15 285.45</b>	CTAF <b>123.6</b>	UNICOM <b>123.0</b>
------------------------	--	----------------------	------------------------



**3400** **LINTZ**

**⬆** **△**

VGSI and RNAV glidepath not coincident (VGSI Angle 3.00/TCH 39).

**4 NM Holding Pattern**

**\*LNAV only.**

**\*2.3 NM to RW23**

**NOWOP** **HILAG** **ODOVY**

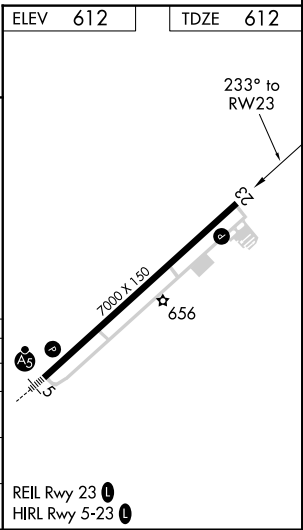
**2800** **3100** **3700**

**233°** **053°** **233°**

**GP 3.34° TCH 56**

**2.3** **3.7 NM** **2.1 NM** **5.9 NM**

CATEGORY	A	B	C	D
LPV DA	952-1	340 (400-1)		NA
LNAV/VNAV DA	1274-2	662 (700-2)		NA
LNAV MDA	1380-1 768 (800-1)	1380-1¼ 768 (800-1¼)	1380-2½ 768 (800-2½)	768 (800-2½)
<b>C</b> CIRCLING	1420-1 808 (900-1)	1420-1¼ 808 (900-1¼)	1420-2½ 808 (900-2½)	1820-3 1208 (1300-3)



SE-4, 31 DEC 2020 to 28 JAN 2021

SE-4, 31 DEC 2020 to 28 JAN 2021