

VOR/DME AHN	APP CRS	Rwy Idg	3995
109.6	014°	TDZE	805
Chan 33		Apt Elev	813

VOR RWY 2

ATHENS/BEN EPPS (AHN)

⚠

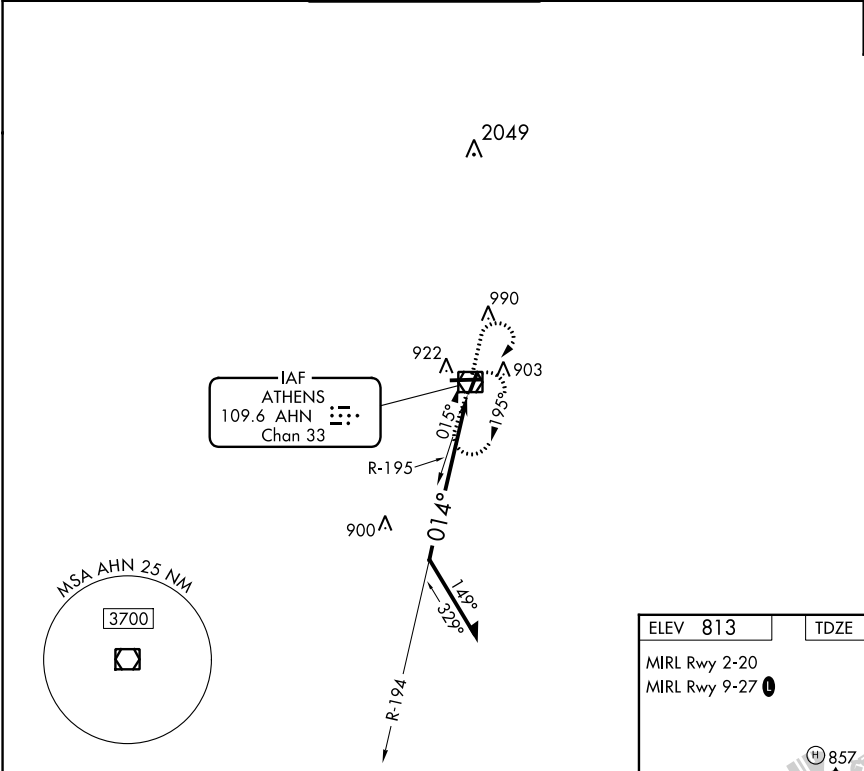
When VGSI inop, Circling Rwy 20 NA at night. When VGSI inop, Straight-in/Circling Rwy 2 procedure NA at night. Visibility reduction by helicopters NA. When local altimeter setting not received, use Winder altimeter setting and increase all MDA 60 feet; increase S-2 Cat D and Circling Cat D visibilities ¼ SM.

MISSED APPROACH: Climb to 2100 then climbing right turn to 2300 direct AHN VOR/DME and hold.

ASOS	ATLANTA APP CON ★	ATHENS TOWER ★	GND CON	CLNC DEL	CLNC DEL
132.875	132.475 291.1 316.05	126.3 (CTAF) 0 338.275	121.8	121.8	132.475 291.1 316.05 (when hwr closed)

UNICOM

122.95



Remain within 10 NM

2100

2300

AHN

194°

014°

2300

AHN VOR/DME

CATEGORY	A	B	C	D
S-2	1220-1	415 (500-1)	1220-1¼	415 (500-1¼)
CIRCLING	1260-1 447 (500-1)	1280-1 467 (500-1)	1320-1½ 507 (600-1½)	1460-2 647 (700-2)

