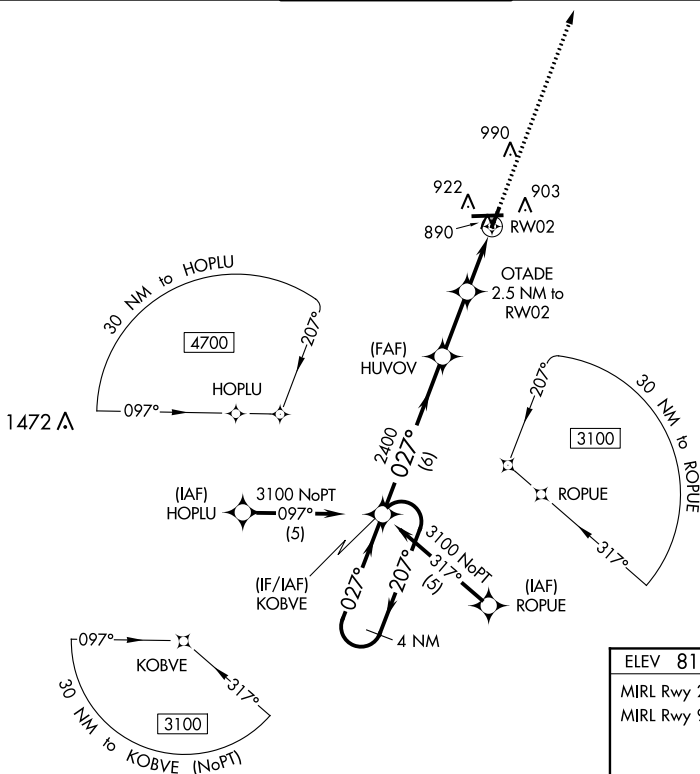


RNAV (GPS) RWY 2
ATHENS/BEN EPPS (AHN)

MISSED APPROACH:
Climb to 3100 direct
UMMIL and hold.

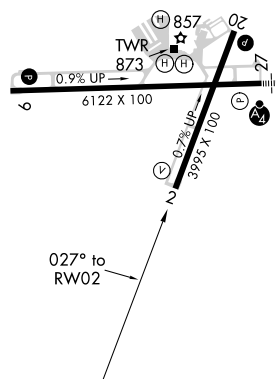
UNICOM
122.95

MISSED APCH FIX




ELEV 813		TDZE 805
----------	--	----------

MIRL Rwy 2-20

MIRL Rwy 9-27 **L**

4 NM Holding Pattern	VGSI and RNAV glidepath not coincident (VGSI Angle 3.75/TCH 39).
-------------------------	---

CATEGORY	A	B	C	D
LNAY MDA	1140-1 335 (400-1)			
 CIRCLING	1260-1 447 (500-1)	1280-1 467 (500-1)	1320-1½ 507 (600-1½)	1460-2 647 (700-2)