

TACAN RWY 11

TACAN DOB  
Chan 77

APCH CRS  
106°

Rwy ldg 10,002  
TDZE 1069  
Arprt Elev 1069

AL-959 [USAF]

DOBBINS ARB (KMGE)

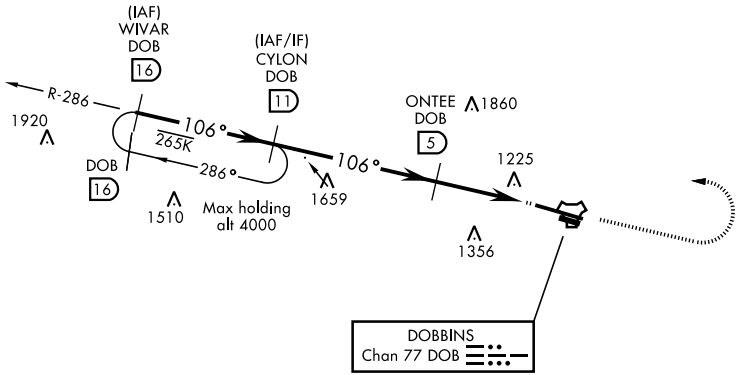
⚠ \* When ALS inop, increase CAT AB RVR to 55 and vis to 1 mile, CAT CDE vis to 1½ miles.  
\*\* Circling not authorized N of Rwy 11-29 for CAT DE aircraft. Circling to assault strip not authorized.

ALSF-1  
A1

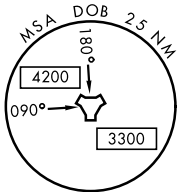
† MISSED APPROACH: Climb to 2000 on track 106°, then climbing left turn to 3000, intercept DOB TACAN R-286 to CYLON and hold.

ATIS ★ 269.5	ATLANTA APP CON 121.0 268.7	DOBBINS TOWER ★ 120.75 370.875	GND CON 125.3 275.8	ASR
-----------------	--------------------------------	-----------------------------------	------------------------	-----

† Missed approach requires use of RNAV or ATC RADAR monitoring.



2049  
A



EMERG SAFE ALT 100 NM 7700

WIVAR R-286 (16)

CYLON (11)

ONTEE (5)

KAMSE (1.8)

TACAN

2000 tr 106°

3000

CYLON DOB (11)

ELEV 1069

TDZE 1069

3000

106°

3000

106°

2300

2.97° TCH 56

3.2 NM

.5 NM

CATEGORY

A

B

C

D

E

S-11\*

1600/40 531 (600-¾)

1600/55 531 (600-1)

CIRCLING\*\*

1660-1 591 (600-1)

1700-1¾ 631 (700-1¾)

1700-2 631 (700-2)

1700-2¼ 631 (700-2¼)

REIL Rwy 11-29

HIRL Rwy 11-29

1255 A

1273 A

10,002 x 300 0.8% DOWN

109°

3495 x 60

ASSAULT STRIP

106° to TACAN

1273 A

289°