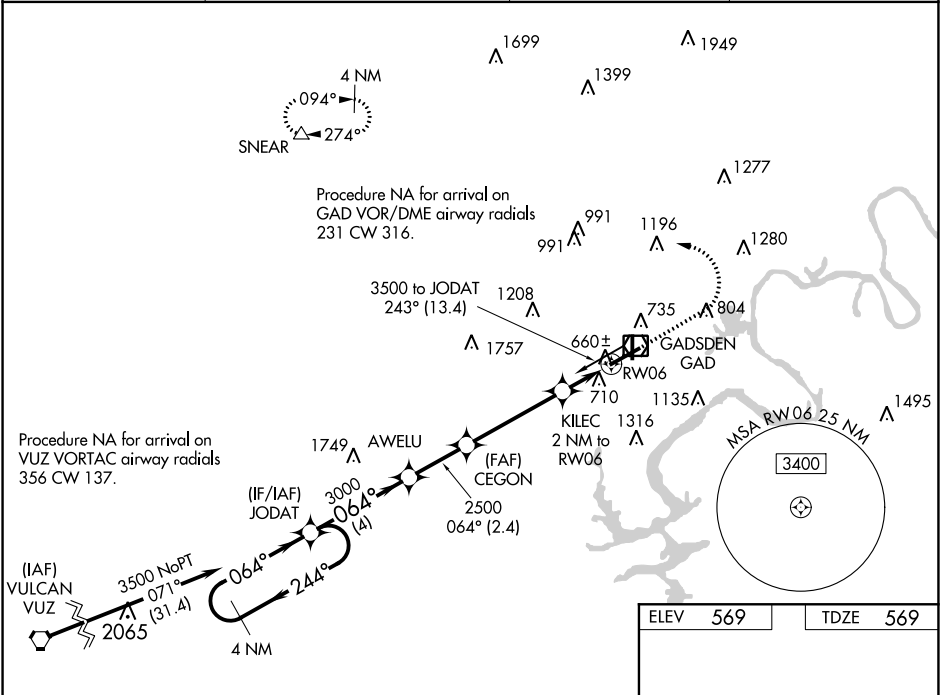


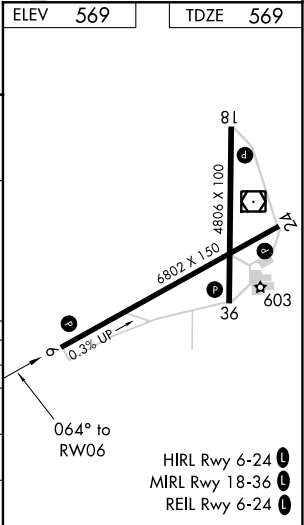
WAAS CH <b>65706</b> <b>W06A</b>	APP CRS <b>064°</b>	Rwy Idg <b>6802</b> TDZE <b>569</b> Apt Elev <b>569</b>
--	------------------------	---

**RNAV (GPS) RWY 6**  
NORTHEAST ALABAMA RGNL (GAD)

RNP APCH. ▼ For uncompensated Baro-VNAV systems, LNAV/VNAV NA below -16°C or above 54°C. ▲ When local altimeter setting is not received, use Anniston altimeter setting and increase all DAs 66 feet and increase all MDAs 80 feet; increase LPV all Cats visibility ¼ SM, and increase LNAV Cats C/D and Circling Cat C visibility ¼ SM. Baro-VNAV and VDP NA when using Anniston altimeter setting.		MISSED APPROACH: Climb to 1300 then climbing left turn to 3500 direct SNEAR and hold.	
AWOS-3PT <b>127.825</b>	BIRMINGHAM APP CON <b>125.45 279.65</b>	CLNC DEL <b>120.05 257.7</b>	UNICOM <b>122.8 (CTAF)</b>



<p>4 NM Holding Pattern</p> <p>JODAT</p> <p>AWELU</p> <p>CEGON</p> <p>KILEC 2 NM to RW06</p> <p>SNEAR</p> <p>3500 ← 244°</p> <p>064° →</p> <p>064°</p> <p>3000</p> <p>2500</p> <p>1240</p> <p>GP 3.00° TCH 40</p> <p>*LNAV only.</p> <p>*1.1 NM to RW06</p> <p>RW06</p> <p>4 NM</p> <p>2.4 NM</p> <p>3.9 NM</p> <p>0.9 NM</p> <p>1.1 NM</p>						
CATEGORY	A		B		C	D
LPV DA			769-¾		200 (200-¾)	
LNAV/VNAV DA			890-1½		321 (400-1½)	
LNAV MDA	960-1	391 (400-1)	960-1½		391 (400-1½)	
CIRCLING	1100-1	531 (600-1)	1100-1½ 531 (600-1½)		1120-2 551 (600-2)	



SE-4, 31 DEC 2020 to 28 JAN 2021

SE-4, 31 DEC 2020 to 28 JAN 2021