

WAAS CH <b>65905</b> <b>W24A</b>	APP CRS <b>244°</b>	Rwy Idg <b>6802</b> TDZE <b>560</b> Apt Elev <b>569</b>
--	------------------------	---

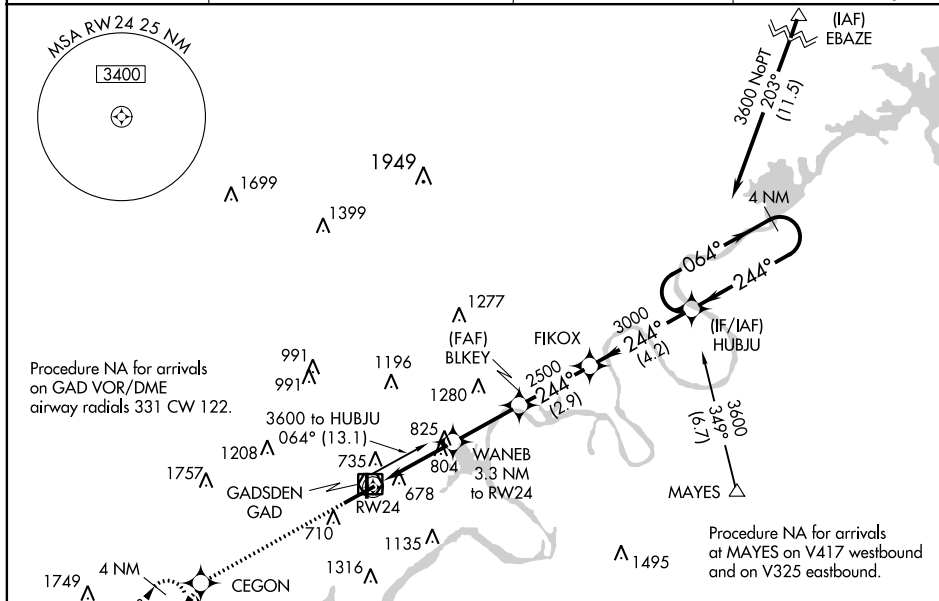
RNAV (GPS) RWY 24  
NORTHEAST ALABAMA RGNL (GAD)

RNP APCH.

**A** For uncompensated Baro-VNAV systems, LNAV/VNAV NA below -16°C or above 54°C . When local altimeter setting not received, use Annonston altimeter setting and increase all DAs 66 feet and increase all MDAs 80 feet; increase LPV all Cats visibility  $\frac{1}{8}$  SM, and increase LNAV Cats C/D and Circling Cat C visibility  $\frac{1}{8}$  SM. Baro-VNAV and VDP NA when using Annonston altimeter setting.

**MISSED APPROACH:** Climb to 3600 direct CEGON and on track 221° to STAMP and hold, continue climb-in-hold to 3600.

AWOS-3PT 127.825	BIRMINGHAM APP CON 125.45 279.65	CLNC DEL 120.05 257.7	UNICOM 122.8 (CTAF) 0
---------------------	-------------------------------------	--------------------------	--------------------------



Altitude	Distance
3600	4 NM
3000	2.9 NM
2500	2.7 NM
1620	1.6 NM
1200	1.7 NM

CATEGORY	A	B	C	D
LPV DA	781-3 <sup>4</sup> / <sub>4</sub>		221 (300-3 <sup>4</sup> / <sub>4</sub> )	
LNAV/ VNAV DA	1016-15 <sup>8</sup> / <sub>8</sub>		456 (500-15 <sup>8</sup> / <sub>8</sub> )	
LNAV MDA	1140-1	580 (600-1)	1140-13 <sup>4</sup> / <sub>4</sub>	580 (600-13 <sup>4</sup> / <sub>4</sub> )
CIRCLING	1140-1	571 (600-1)	1140-13 <sup>4</sup> / <sub>4</sub> 571 (600-13 <sup>4</sup> / <sub>4</sub> )	1140-2 571 (600-2)

