

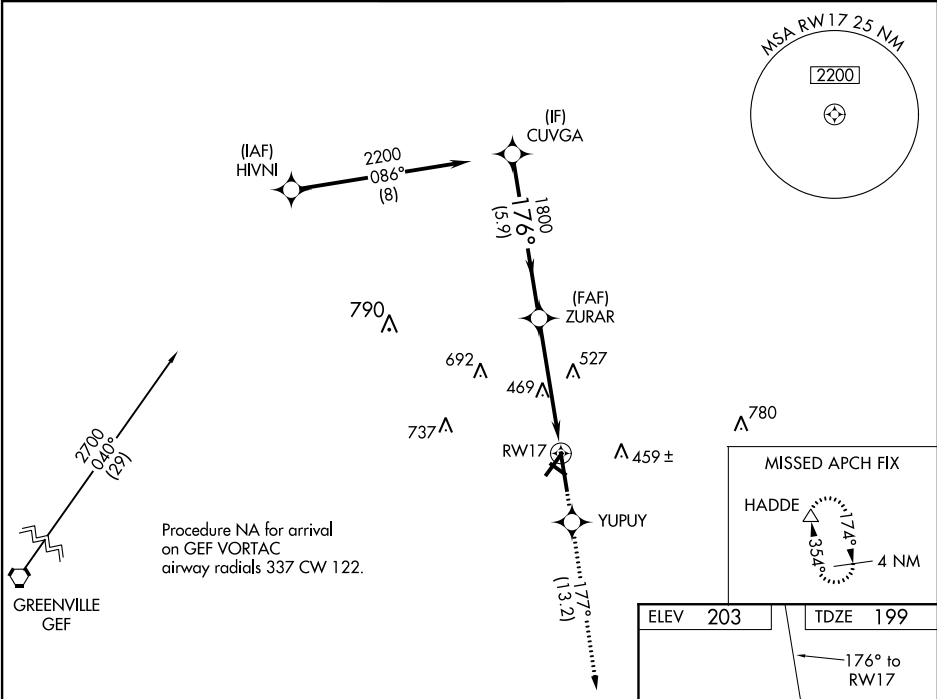
WAAS CH 87101 W17A	APP CRS 176°	Rwy Idg TDZE 199 Apt Elev 203
--	------------------------	---

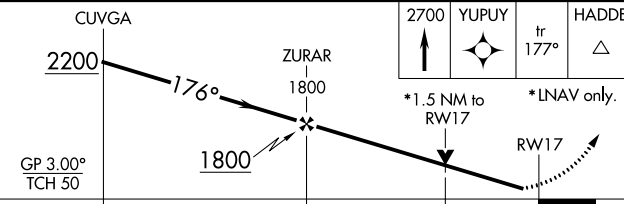
RNAV (GPS) RWY 17
VALDOSTA RGNL (VLD)

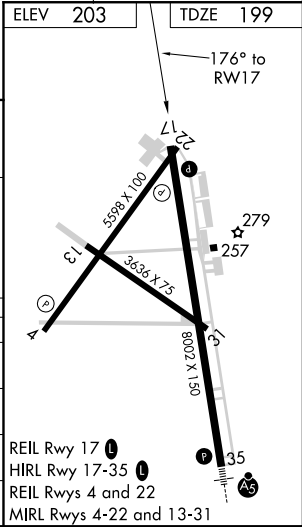
⚠ For uncompensated Baro-VNAV systems, LNAV/VNAV NA below -6°C (22°F) or above 54°C (130°F). Circling Rwy 4, 13, 31 NA at night. Rwy 17 helicopter visibility reduction below ¾ SM NA. DME/DME RNP-0.3 NA. When local altimeter setting not received, use Moultrie altimeter setting: increase LPV DA to 542 feet and all visibilities ¾ SM; increase LNAV/VNAV DA to 546 and all visibilities ¼ SM; increase all MDA 100 feet and visibility Cat C and D ¼ SM. Baro-VNAV and VDP NA when using Moultrie altimeter setting.

MISSED APPROACH:
Climb to 2700 direct YUPUY and on track 177° to HADDE and hold.

ASOS 126.225	VALDOSTA APP CON ★ 126.6 285.6	VALDOSTA TOWER ★ 120.9 (CTAF) 0	GND CON 121.7	UNICOM 122.95
------------------------	--	---	-------------------------	-------------------------



 <p>CUVGA</p> <p>2200</p> <p>176°</p> <p>ZURAR</p> <p>1800</p> <p>GP 3.00° TCH 50</p> <p>5.9 NM</p> <p>3.4 NM</p> <p>1.5 NM</p> <p>RW17</p> <p>*1.5 NM to RW17</p> <p>*LNAV only.</p> <p>2700</p> <p>YUPUY</p> <p>tr 177°</p> <p>HADDE</p>						
CATEGORY	A	B	C	D		
LPV DA	454-¾		255 (300-¾)			
LNAV/ VNAV DA	458-⅞		259 (300-⅞)			
LNAV MDA	720-1	521 (600-1)	720-1½	521 (600-1½)		
CIRCLING	720-1	517 (600-1)	720-1½ 517 (600-1½)	780-2 577 (600-2)		



SE-4, 31 DEC 2020 to 28 JAN 2021

SE-4, 31 DEC 2020 to 28 JAN 2021