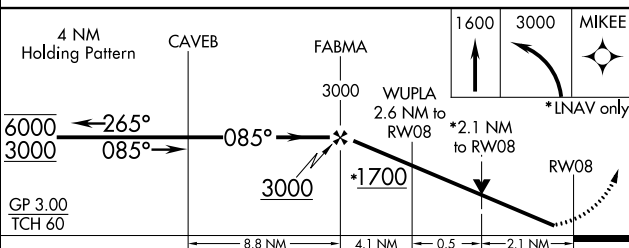
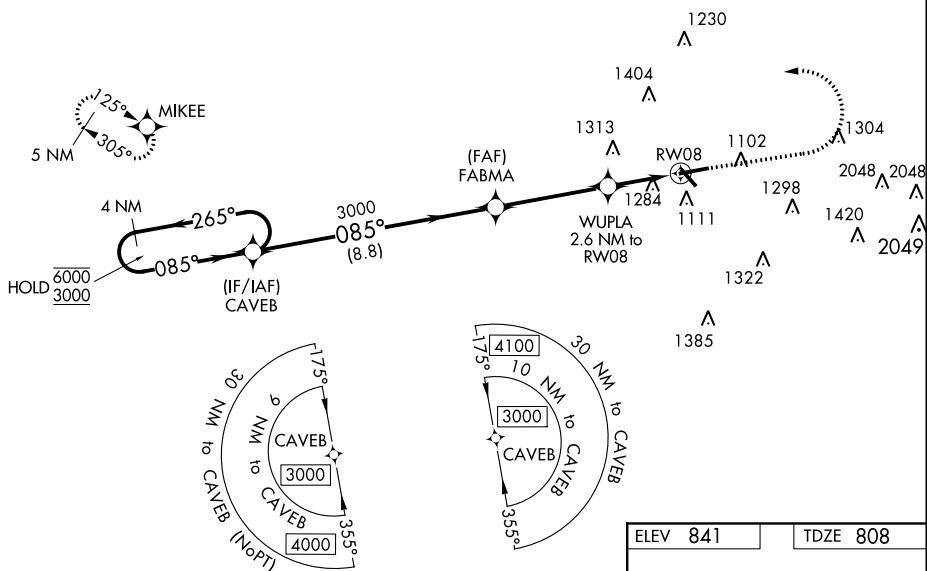



RNAV (GPS) Y RWY 8
FULTON COUNTY EXECUTIVE/CHARLIE BROWN FIELD (FTY)

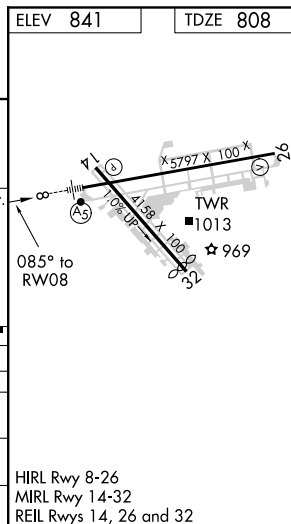
▼ Circling Rwy 14, 32 NA at night. Rwy 8 helicopter visibility reduction below $\frac{3}{4}$ SM NA.
▲ For uncompensated Baro-VNAV systems, LNAV/VNAV NA below -11°C or above 54°C .
 For inop ALS, increase LNAV/VNAV all Cats visibility to $2\frac{1}{2}$ SM and LNAV Cat C/D to 2 SM. Ridge with trees to 1299' MSL between FAF and runway threshold may be obscured by clouds even with airfield ceiling at or above procedure minimums.

MISSED APPROACH:
Climb to 1600 then
climbing left turn to 3000
direct MIKEE and hold.

GND CON
121.7 348.6



CATEGORY		A	B	C	D
LPV	DA	1058-½		250 (300-½)	
LNAV/ VNAV	DA	1637-1⅞		829 (800-1⅞)	
LNAV	MDA	1540-½ 732 (700-½)		1540-1⅝ 732 (700-1⅝)	
 CIRCLING		1540-1 699 (700-1)		1740-2¾ 899 (900-2¾) 1740-3 899 (900-3)	



RNAV (GPS) Y RWY 8

SE-4, 31 DEC 2020 to 28 JAN 2021