

REDSTONE ARSENAL, ALABAMA

RNAV (GPS) RWY 35

WAAS CH 50238 W35A	APCH CRS 353°	Rwy Idg 7297 TDZE 661 Arpt Elev 685
---------------------------------	------------------	--

AL-703 (USA)

REDSTONE AAF (KHUA)

T * Circling not authorized E of Rwy 17-35.

MISSED APPROACH: Climb to 3000 direct IPUDE and hold.

ATIS
120.65

HUNTSVILLE APP CON/DEP CON
125.6 354.1

TOWER★
126.95 (CTAF) 0 290.275

PAR

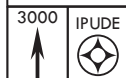
DME/DME RNP-0.3 NA

For uncompensated Baro-VNAV systems, LNAV/VNAV NA below -9°C (16°F) or above 54°C (130°F).

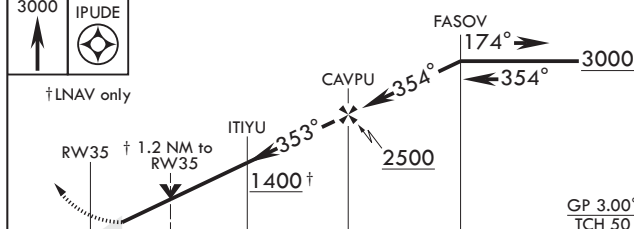
Inoperative table does not apply to LPV all CAT and LNAV CAT AB.


Procedure NA for arrivals
at RQZ VORTAC airway R-147
CW R-261.

Procedure NA for arrivals
at FEWER on V325 southeast
bound.



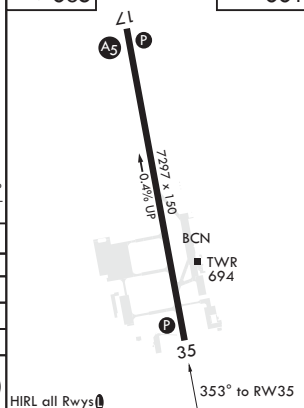
† LNAV only



CATEGORY	A	B	C	D	E
LPV DA	920-1		259	(300-1)	
LNAV/VNAV DA	1 140-1½		479	(500-1½)	
LNAV MDA	1320-1	659 (700-1)	1320-1½ 659 (700-1½)		
 CIRCLING*	1320-1	635 (700-1)	1480-2¼ 795 (800-2¼)	1740-3 1055 (1100-3)	

ELEV 68.5

TDZE 661



REDSTONE ARSENAL, ALABAMA

34°41'N - 86°41'W

REDSTONE AAF (KHUA)

Amdt 1A 10SEP20

RNAV (GPS) RWY 35

SE-4, 31 DEC 2020 to 28 JAN 2021

SE-4, 31 DEC 2020 to 28 JAN 2021